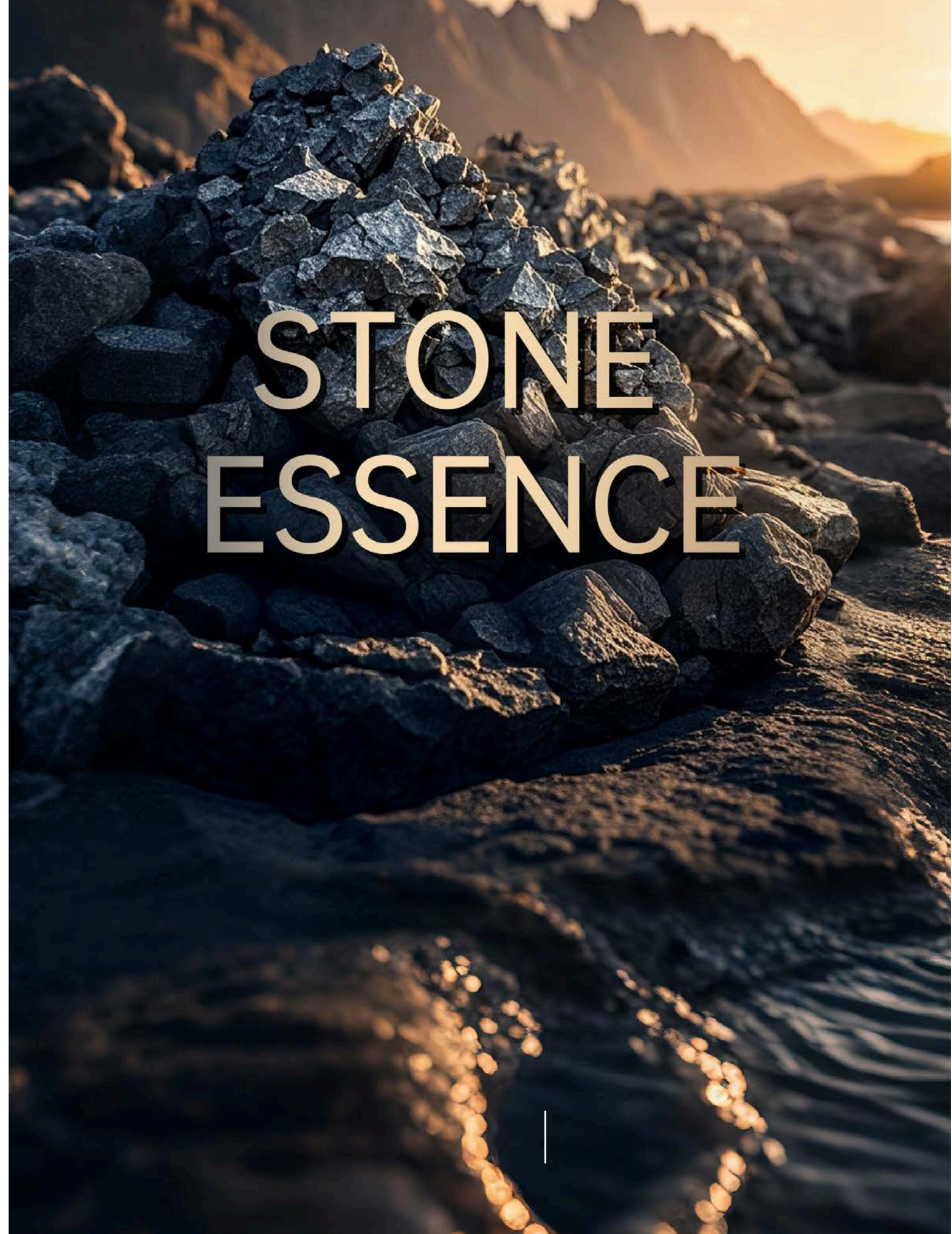


MONTILE^o

NO. 4, JALAN TSB 3, TAMAN INDUSTRI SUNGAI BULOH,
47000 SUNGAI BULOH, SELANGOR.
Tel : 03-6150 6307 Email : jrc.corporatesb@gmail.com



**STONE
ESSENCE**

MONTILE^o

INDEX

PIETRA CIOTOLI

LIMESTONE

MALMSTONE

GRITSTONE

VEIN TRAVERTINE

CROSS TRAVERTINE

STONEHENGE

COLUMBUS

LOMBARDIA

MOORE STONE

BASALT

05

15

23

29

37

45

51

57

65

73

79





MATT

LAPPATO



ANTI-SLIP

3 SURFACES

One Complete Solution To Cover Most Of Architectural Spaces In A Harmonious Way.

MATT

Helps To Create A Certain Softness That Is Both Calming And Tranquil, Which A Dull And Lusterless Surface Is Trending Now.

LAPPATO

A Reflective Or Semi-Glossy Surface That Most Modern Urban Homes Applied For Their Own Interior Designs.

ANTI-SLIP

Reducing The Chance Of Slip And Fall Accidents, Make Litigation At Your Work Place And Public Area, With Yet All Elegance No Less.



PIETRA CIOTOLI

PORCELAIN

FULL BODY

- MATT
- LAPPATO
- ANTI-SLIP

WALL TILE

- GLOSSY
- WAVE
- DÉCOR



WHITE

LIGHT GREY

MEDIUM GREY

TAUPE

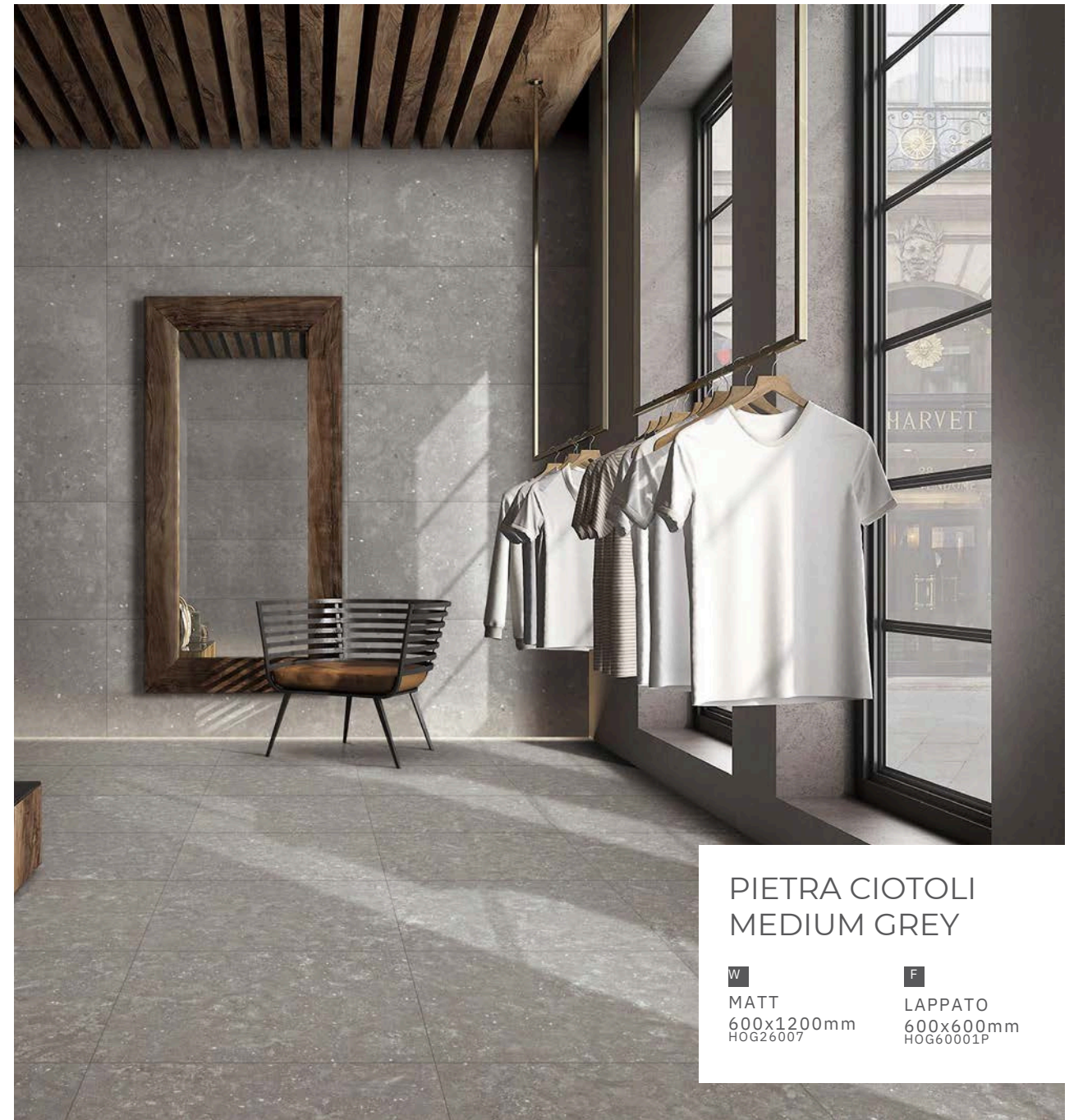
DARK GREY

PIETRA CIOTOLI
Small Or Medium-Sized
Pebble-Look Design Are
Easily Adaptable To All
Spaces With Combination Of
Aesthetics And Functionality.



PIETRA CIOTOLI
LIGHT GREY

F
MATT (ANTI-SLIP)
600x600mm
HOG60508



PIETRA CIOTOLI
MEDIUM GREY

W	F
MATT	LAPPATO
600x1200mm	600x600mm
HOG26007	HOG60001P

MATT

A Refined Finish Of The Collection, An Elegant Surface That Is Pleasant To Touch. It Can Fulfill The Most Demanding Standards.



Wear-resisting



Non-slipping

LAPPATO

The Lappato Surface Is An Example Of Flawless Elegance: The Surface, Soft And Silky To The Touch, Generates Subtle Reflections And Inspires The Depth And Beauty Of Stone.



Wear-resisting



Non-slipping



PIETRA CIOTOLI
WHITE

F
ANTI-SLIP
600x600mm
HOG60015

ANTI-SLIP

Enhanced tactile sensation on the surface, increases slip resistance, making it ideally suited for outdoor and semi-outdoor spaces.



Wear-resisting



Non-slipping



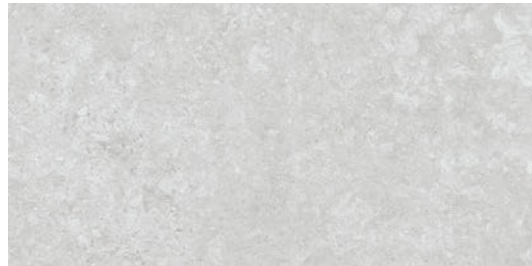
PIETRA CIOTOLI
DARK GREY

W	F
LAPPATO	LAPPATO
600x1200mm	150x1200mm
HOG26002P	HOG26002P

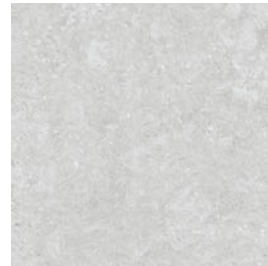
PIETRA CIOTOLI
WHITE

F
LAPPATO
600x600mm
HOG60004P

PORCELAIN FULL BODY



WHITE - MATT



WHITE - LAPPATO



WHITE - ANTI-SLIP



LIGHT GREY - MATT



LIGHT GREY - LAPPATO



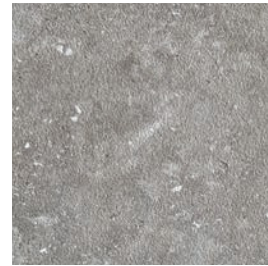
LIGHT GREY - ANTI-SLIP



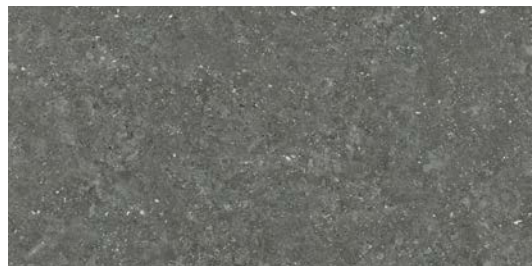
MEDIUM GREY - MATT



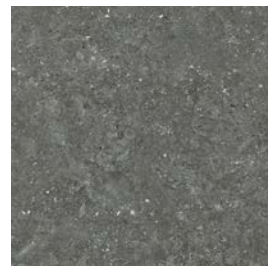
MEDIUM GREY - LAPPATO



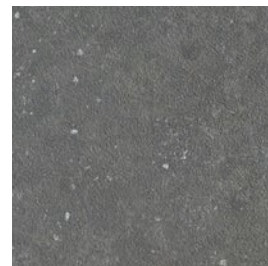
MEDIUM GREY - ANTI-SLIP



DARK GREY - MATT



DARK GREY - LAPPATO



DARK GREY - ANTI-SLIP



TAUPE - MATT



TAUPE - LAPPATO



TAUPE - ANTI-SLIP

CONFORMING TO STANDARDS

*EN 14411 / ISO 13006 APPENDIX G. GROUP BIa GL CON Eb ≤ 0.5%



BREAKING STRENGTH



FROST RESISTANCE



CHEMICALS RESISTANCE



STAIN RESISTANCE



ANTISLIP TEST RESULT
P5 (AS-4586.A)
R10 (DIN EN 16165:2023-02)



FIREPROOF



ANSI A137.1
> 0,42



SHADE VARIATION V2



COLOUR	SURFACE	600x1200mm	200x1200mm	600x600mm	300x600mm
WHITE	MATT	HOG26009	MB-HOG26009	HOG60009	MA-HOG60009
	LAPPATO	HOG26004P	MB-HOG26004P	HOG60004P	MA-HOG60004P
	ANTI-SLIP	-	-	HOG60015	MA-HOG60015
LIGHT GREY	MATT	* HOG26508	MB-HOG26508	* HOG60508	MA-HOG60508
	LAPPATO	HOG26003P	MB-HOG26003P	HOG60003P	MA-HOG60003P
	ANTI-SLIP	-	-	HOG60014	MA-HOG60014
MEDIUM GREY	MATT	HOG26006	MB-HOG26007	* HOG60507	*MA-HOG60507
	LAPPATO	HOG26002P	MB-HOG26001P	HOG60001P	MA-HOG60001P
	ANTI-SLIP	-	-	HOG60013	MA-HOG60013
DARK GREY	MATT	HOG26010	MB-HOG26006	HOG60006	MA-HOG60006
	LAPPATO	HOG26005P	MB-HOG26002P	HOG60002P	MA-HOG60002P
	ANTI-SLIP	-	-	HOG60012	MA-HOG60012
TAUPE	MATT	-	MB-HOG26010	HOG60010	MA-HOG60010
	LAPPATO	-	MB-HOG26005P	HOG60005P	MA-HOG60005P
	ANTI-SLIP	-	-	HOG60011	MA-HOG60011

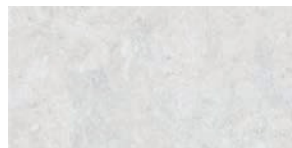
PACKING

SIZE	THICKNESS	PCS/BOX	M2/BOX	KG/BOX	CTNS/PALLET	M2/PALLET	KG/PALLET
600x1200mm	10mm	2	1.44	32.40	56	80.64	1814.40
200x1200mm	10mm	4	0.96	21.60	45	43.20	972.00
600x600mm	9.5mm	4	1.44	31.20	36	51.84	1123.20
300x600mm	9.5mm	8	1.44	31.20	40	57.60	1248.00

WALL TILE



WHITE - GLOSSY 300x600mm



WHITE - GLOSSY



WHITE - WAVE



LIGHT GREY - GLOSSY



LIGHT GREY - WAVE



LIGHT GREY - DÉCOR

CONFORMING TO STANDARDS

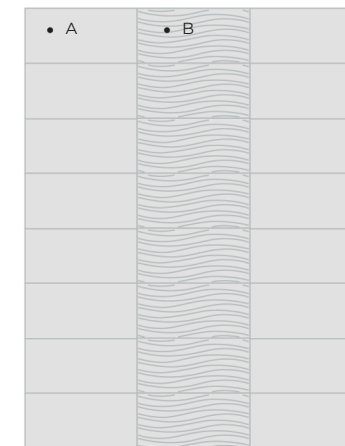
*EN 14411 / ISO 13006 APPENDIX G. GROUP BIa GL CON Eb > 10%



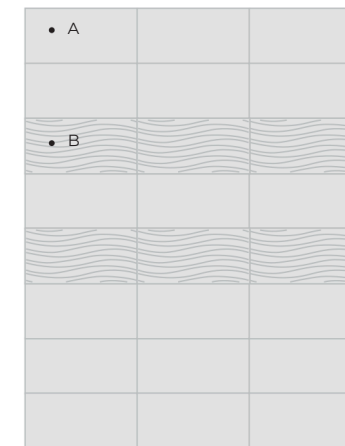
COLOUR	SURFACE	300x600mm
WHITE	GLOSSY	3A60793
	WAVE	3E60792
	DÉCOR	-
LIGHT GREY	GLOSSY	3A60795
	WAVE	2-3E60791
	DÉCOR	2-3B60798



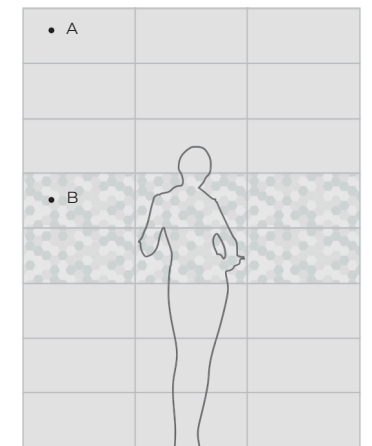
LAYING INDICATION



A: GLOSSY 300x600mm
B: WAVE 300x600mm



A: GLOSSY 300x600mm
B: WAVE 300x600mm



A: GLOSSY 300x600mm
B: DÉCOR 300x600mm

PACKING

SIZE	THICKNESS	PCS/BOX	M2/BOX	KG/BOX	CTNS/PALLET	M2/PALLET	KG/PALLET
300x600mm	10mm	8	1.44	26.00	60	86.40	1560.00

PORCELAIN TILE



CONFORMING TO STANDARDS

*EN 14411 / ISO 13006 APPENDIX G. GROUP BIa GL CON Eb ≤ 0.5%

PHYSICAL PROPERTIES	TESTING METHOD	REFERENCE STANDARD	PRODUCT VALUES
LENGTH		±0.6%, ±2.0mm	±0.06%, ±0.6mm
WIDTH	EN ISO 10545-2:2018	±0.6%, ±2.0mm	±0.06%, ±0.6mm
THICKNESS		±5%, ±0.5mm	±1.2%, ±0.1mm
WATER ABSORPTION	EN ISO 10545-3:2018	Eb ≤ 0.5%	Eb ≤ 0.09%
BREAKING STRENGTH (N)		≥ 1300	S ≥ 2000
MODULUS OF RUPTURE (Mpa) , NOT APPLICABLE TO TILES WITH BREAKING STRENGTH ≥ 3000N	EN ISO 10545-4:2019	≥ 35	R ≥ 40
ABRASION RESISTANCE	EN ISO 10545-7:1998 / AC:1999	REPORT VALUE	CLASS 2, 600 CYCLES / CLASS 4, 2100 CYCLES
THERMAL SHOCK RESISTANCE	EN ISO 10545-9:2013	PASS ACCORDING TO EN ISO 10545-9:2013	FULLY RESISTANCE
CRAZING RESISTANCE (GLAZED TILES)	EN ISO 10545-11:1996	PASS ACCORDING TO EN ISO 10545-11:1996	FULLY RESISTANCE
SLIPPERINESS	DIN 51130:2014	DECLARED VALUE	R9 / R10 / R11
REACTION TO FIRE	--	CLASS A1 OR A1FL	WALL - CLASS A1; FLOOR - CLASS A1fl
RESISTANCE TO STAINING	EN ISO 10545-14:2015	MINIMUM CLASS 3	CLASS 5
RESISTANCE TO HOUSEHOLD CHEMICALS AND SWIMMING POOL SALTS		MINIMUM CLASS B	A
RESISTANCE TO LOW CONCENTRATIONS OF ACIDS AND ALKALIS	EN ISO 10545-13:2016	DECLARED VALUE	LA
RESISTANCE TO LOW CONCENTRATIONS OF ACIDS AND ALKALIS		DECLARED VALUE	HA

* EXCLUDING HYDROFLUORIC ACID AND DERIVATIVES

VITRIFIED PORCELAIN TILE



CONFORMING TO STANDARDS

*EN 14411 / ISO 13006 APPENDIX H. GROUP BIb GL CON 0.5% < Eb ≤ 3%

PHYSICAL PROPERTIES	TESTING METHOD	REFERENCE STANDARD	PRODUCT VALUES
LENGTH		±0.3%, ±1.0mm	±0.02%, ±0.1mm
WIDTH	EN ISO 10545-2:2018	±0.3%, ±1.0mm	±0.02%, ±0.1mm
THICKNESS		±5%, ±0.5mm	±1.0%, ±0.1mm
WATER ABSORPTION	EN ISO 10545-3:2018	0.5% < Eb ≤ 3%	2.9%
BREAKING STRENGTH (N)		≥ 1100	S ≥ 2000 ≥ 1650
MODULUS OF RUPTURE (Mpa) , NOT APPLICABLE TO TILES WITH BREAKING STRENGTH ≥ 3000N	EN ISO 10545-4:2019	≥ 35 ≥ 30	R ≥ 40 ≥ 33
ABRASION RESISTANCE	EN ISO 10545-7:1998 / AC:1999	REPORT VALUE	CLASS 2, 600 CYCLES / CLASS 4, 2100 CYCLES
THERMAL SHOCK RESISTANCE	EN ISO 10545-9:2013	PASS ACCORDING TO EN ISO 10545-9:2013	FULLY RESISTANCE
CRAZING RESISTANCE (GLAZED TILES)	EN ISO 10545-11:1996	PASS ACCORDING TO EN ISO 10545-11:1996	FULLY RESISTANCE
SLIPPERINESS	DIN 51130:2014	DECLARED VALUE	R9 / R10 / R11
REACTION TO FIRE	--	CLASS A1 OR A1FL	WALL - CLASS A1; FLOOR - CLASS A1fl
RESISTANCE TO STAINING	EN ISO 10545-14:2015	MINIMUM CLASS 3	CLASS 5
RESISTANCE TO HOUSEHOLD CHEMICALS AND SWIMMING POOL SALTS		MINIMUM CLASS B	A
RESISTANCE TO LOW CONCENTRATIONS OF ACIDS AND ALKALIS	EN ISO 10545-13:2016	DECLARED VALUE	LA
RESISTANCE TO LOW CONCENTRATIONS OF ACIDS AND ALKALIS		DECLARED VALUE	HA

* EXCLUDING HYDROFLUORIC ACID AND DERIVATIVES

LIMESTONE

PORCELAIN

FULL BODY

- MATT
- LAPPATO
- ANTI-SLIP

WALL TILE

- GLOSSY
- WAVE
- DÉCOR

LIMESTONE

WHITE

LIGHT GREY

MEDIUM GREY

BEIGE

DARK GREY

LIMESTONE

Smooth To The Touch With A Seasoned Surface, Every Step We Take Is Like Gliding Gracefully And Effortlessly, Creating A Differential Feeling For Every Space.

LIMESTONE



LIMESTONE
BEIGE

W	F
MATT	ANTI-SLIP
600x600mm	600x600mm
KG60063	KG60096



LIMESTONE
LIGHT GREY

W	D	F
GLOSSY	WAVE	MATT
300x600mm	300x600mm	300x300mm
2-6B60477	3-6E60476	2-6R30477

PORCELAIN FULL BODY



WHITE - MATT



WHITE - LAPPATO



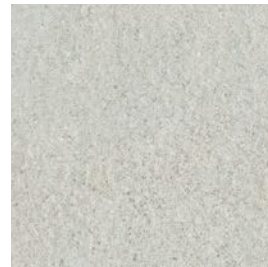
WHITE - ANTI-SLIP



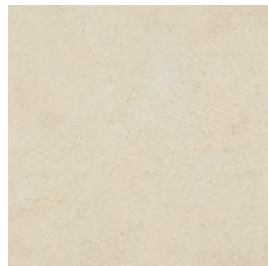
LIGHT GREY - MATT



LIGHT GREY - LAPPATO



LIGHT GREY - ANTI-SLIP



BEIGE - MATT



BEIGE - LAPPATO



BEIGE - ANTI-SLIP



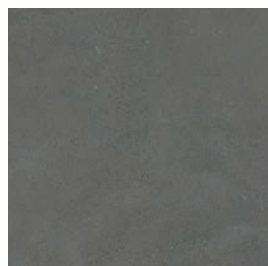
MEDIUM GREY - MATT



MEDIUM GREY - LAPPATO



MEDIUM GREY - ANTI-SLIP



DARK GREY - MATT



DARK GREY - LAPPATO



DARK GREY - ANTI-SLIP

CONFORMING TO STANDARDS

*EN 14411 / ISO 13006 APPENDIX G. GROUP BIa GL CON Eb ≤ 0.5%



BREAKING STRENGTH



FROST RESISTANCE



CHEMICALS RESISTANCE



STAIN RESISTANCE



RECTIFIED



FIREPROOF



ANSI A137.1 > 0,42



SHADE VARIATION V2



COLOUR	SURFACE	600x600mm	300x600mm
		KG60082	MA-KG60082
WHITE	LAPPATO	KG60082P	MA-KG60082P
	ANTI-SLIP	KG60095	MA-KG60095
	MATT	KG60061	MA-KG60061
LIGHT GREY	LAPPATO	KG60061P	MA-KG60061P
	ANTI-SLIP	KG60093	MA-KG60093
	MATT	KG60063	MA-KG60063
BEIGE	LAPPATO	KG60063P	MA-KG60063P
	ANTI-SLIP	KG60096	MA-KG60096
	MATT	KG60080	MA-KG60080
MEDIUM GREY	LAPPATO	KG60080P	MA-KG60080P
	ANTI-SLIP	KG60094	MA-KG60094
	MATT	KG60079	MA-KG60079
DARK GREY	LAPPATO	KG60079P	MA-KG60079P
	ANTI-SLIP	KG60091	MA-KG60091



PACKING

SIZE	THICKNESS	PCS/BOX	M2/BOX	KG/BOX	CTNS/PALLET	M2/PALLET	KG/PALLET
600x600mm	9.5mm	4	1.44	31.20	36	51.84	1123.20
300x600mm	9.5mm	8	1.44	31.20	40	57.60	1248.00

WALL TILE



WHITE - GLOSSY 300x600mm



WHITE - GLOSSY



WHITE - WAVE



WHITE - DÉCOR



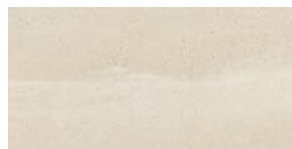
LIGHT GREY - GLOSSY



LIGHT GREY - WAVE



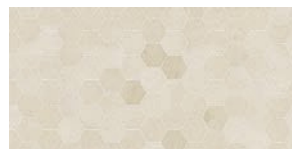
LIGHT GREY - DÉCOR



BEIGE - GLOSSY



BEIGE - WAVE



BEIGE - DÉCOR

CONFORMING TO STANDARDS

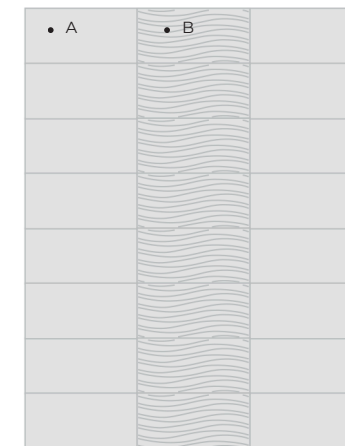
*EN 14411 / ISO 13006 APPENDIX G. GROUP BIa GL CON Eb > 10%



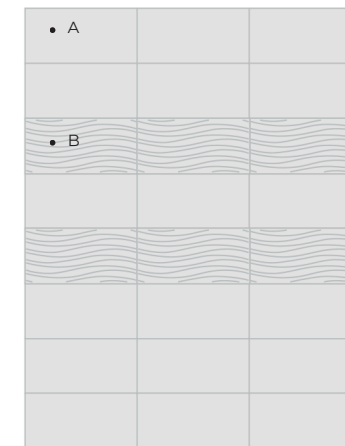
COLOUR	SURFACE	300x600mm
WHITE	GLOSSY	6A60478
	WAVE	3-6E60480
	DÉCOR	4-6B60576
LIGHT GREY	GLOSSY	2-6B60477
	WAVE	3-6E60476
	DÉCOR	4-6B60575
BEIGE	GLOSSY	2-6B60481
	WAVE	3-6E60479
	DÉCOR	4-6B60578



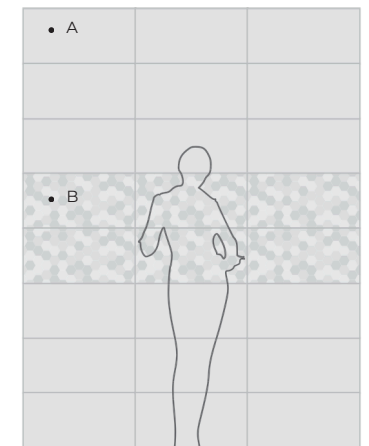
LAYING INDICATION



A: GLOSSY 300x600mm
B: WAVE 300x600mm



A: GLOSSY 300x600mm
B: WAVE 300x600mm



A: GLOSSY 300x600mm
B: DÉCOR 300x600mm

PACKING

SIZE	THICKNESS	PCS/BOX	M2/BOX	KG/BOX	CTNS/PALLET	M2/PALLET	KG/PALLET
300x600mm	10mm	8	1.44	26.00	60	86.40	1560.00

MALMSTONE

PORCELAIN

FULL BODY

- MATT
- LAPPATO
- ANTI-SLIP

WALL TILE

- GLOSSY
- WAVE
- DÉCOR



MALMSTONE

MALMSTONE

Classic And Soft Creamy Colors Inspire All The Design Passion, Yet Make You Feel All The Toughness Of Natural Stone.



MALMSTONE
WHITE
W
M



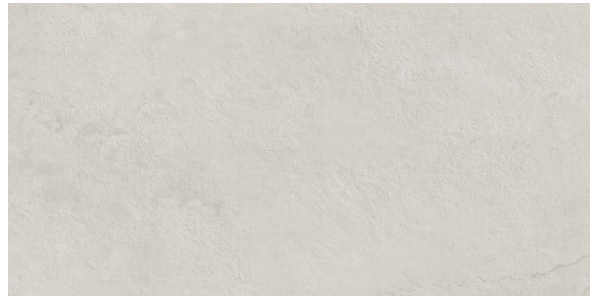
MALMSTONE
LIGHT GREY

MATT
200x1200mm
HOG26039

MALMSTONE
DARK GREY

F
LAPPATO
600x600mm
HOG60033P

PORCELAIN FULL BODY



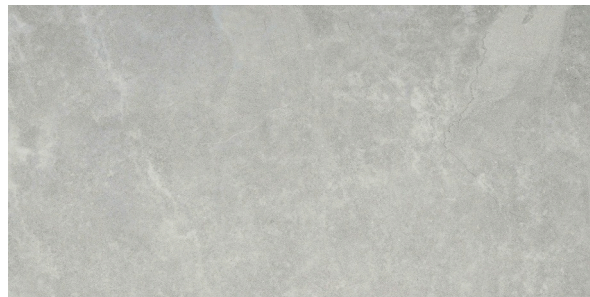
WHITE - MATT



WHITE - LAPPATO



WHITE - ANTI-SLIP



LIGHT GREY - MATT



LIGHT GREY - LAPPATO



LIGHT GREY - ANTI-SLIP



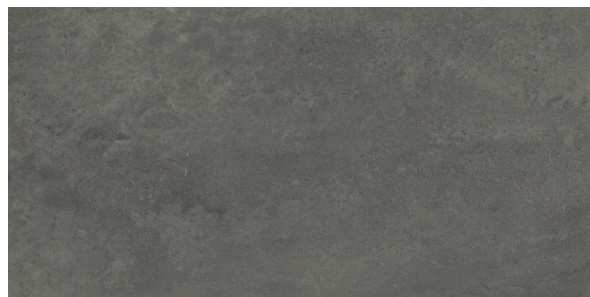
MEDIUM GREY - MATT



MEDIUM GREY - LAPPATO



MEDIUM GREY - ANTI-SLIP



DARK GREY - MATT



DARK GREY - LAPPATO



DARK GREY - ANTI-SLIP

CONFORMING TO STANDARDS

*EN 14411 / ISO 13006 APPENDIX G. GROUP BIa GL CON Eb ≤ 0.5%



BREAKING STRENGTH



FROST RESISTANCE



CHEMICALS RESISTANCE



STAIN RESISTANCE



ANTISLIP TEST RESULT
P5 (AS-4586.A)
R10 (DIN EN 16165:2023-02)



FIREPROOF



ANSI A137.1
> 0,42



SHADE VARIATION V2



COLOUR	SURFACE	600x1200mm	200x1200mm	600x600mm	300x600mm
WHITE	MATT	HOG26560	MB-HOG26560	* HOG60560	MA-HOG60560
	LAPPATO	HOG26036P	MB-HOG26036P	HOG60061P	MA-HOG60061P
	ANTI-SLIP	-	-	HOG60042	MA-HOG60042
LIGHT GREY	MATT	* HOG26539	MB-HOG26539	* HOG60539	MA-HOG60539
	LAPPATO	HOG26035P	MB-HOG26035P	HOG60035P	MA-HOG60035P
	ANTI-SLIP	-	-	HOG60043	MA-HOG60043
MEDIUM GREY	MATT	HOG26038	MB-HOG26038	* HOG60538	MA-HOG60538
	LAPPATO	HOG26034P	MB-HOG26034P	HOG60034P	MA-HOG60034P
	ANTI-SLIP	-	-	HOG60044	MA-HOG60044
DARK GREY	MATT	HOG26037	MB-HOG26037	* HOG60537	MA-HOG60537
	LAPPATO	HOG26033P	MB-HOG26033P	HOG60033P	MA-HOG60033P
	ANTI-SLIP	-	-	HOG60045	MA-HOG60045

PACKING

SIZE	THICKNESS	PCS/BOX	M2/BOX	KG/BOX	CTNS/PALLET	M2/PALLET	KG/PALLET
600x1200mm	10mm	2	1.44	32.40	56	80.64	1814.40
200x1200mm	10mm	4	0.96	21.60	45	43.20	972.00
600x600mm	9.5mm	4	1.44	31.20	36	51.84	1123.20
300x600mm	9.5mm	8	1.44	31.20	40	57.60	1248.00

GRITSTONE

PORCELAIN

- POLISHED
- MATT (ANTI-SLIP)

GRITSTONE

WHITE

LIGHT GREY

MEDIUM GREY

BEIGE

DARK GREY

GRITSTONE

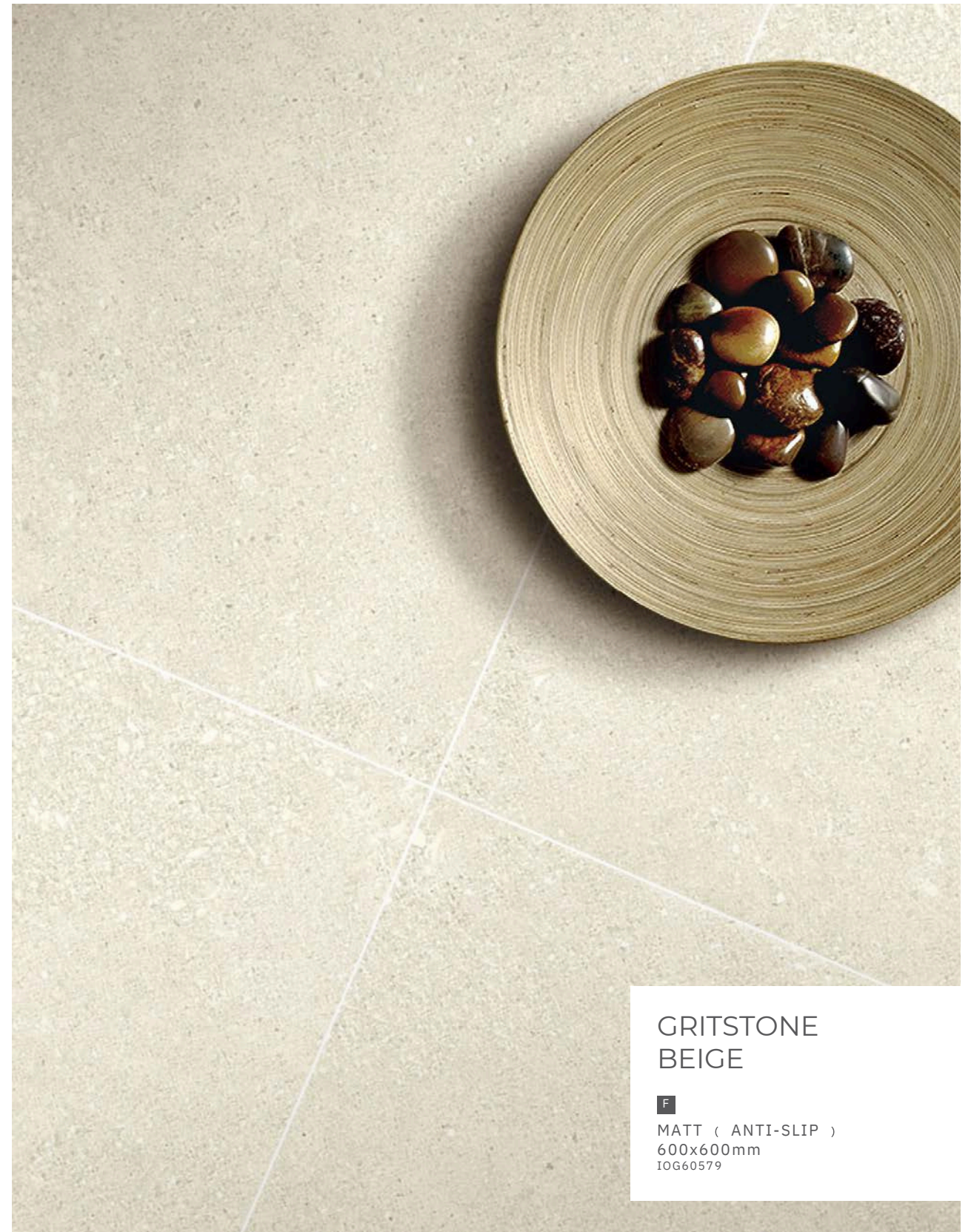
Embrace The Whisper Of Stone. A Canvas Of Tranquil Hues,Where Every Step Is A Dance With Elegance.

GRITSTONE



GRITSTONE
WHITE

F
POLISHED
600x600mm
IPOG60078



GRITSTONE
BEIGE

F
MATT (ANTI-SLIP)
600x600mm
IOG60579



GRITSTONE
LIGHT GREY

F
POLISHED
600x600mm
IPOG60080



GRITSTONE
MEDIUM GREY

W
MATT (ANTI-SLIP)
600x1200mm
IOG26581

GRITSTONE
DARK GREY

F
MATT (ANTI-SLIP)
600x1200mm
IOG26582

PORCELAIN



WHITE - POLISHED



WHITE - MATT (ANTI-SLIP)



BEIGE - POLISHED



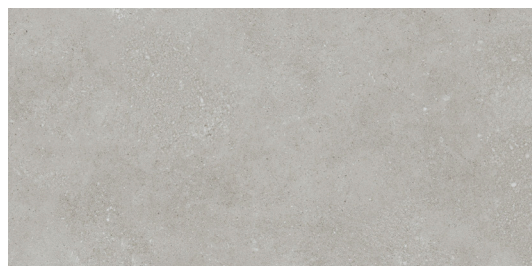
BEIGE - MATT (ANTI-SLIP)



LIGHT GREY - POLISHED



LIGHT GREY - MATT (ANTI-SLIP)



MEDIUM GREY - POLISHED



MEDIUM GREY - MATT (ANTI-SLIP)



DARK GREY - POLISHED



DARK GREY - MATT (ANTI-SLIP)

CONFORMING TO STANDARDS

*EN 14411 / ISO 13006 APPENDIX G. GROUP BIa GL CON Eb ≤ 0.5%



BREAKING STRENGTH



FROST RESISTANCE



CHEMICALS RESISTANCE



STAIN RESISTANCE



ANTISLIP TEST RESULT P5 (AS-4586.A) R10 (DIN EN 16165:2023-02)



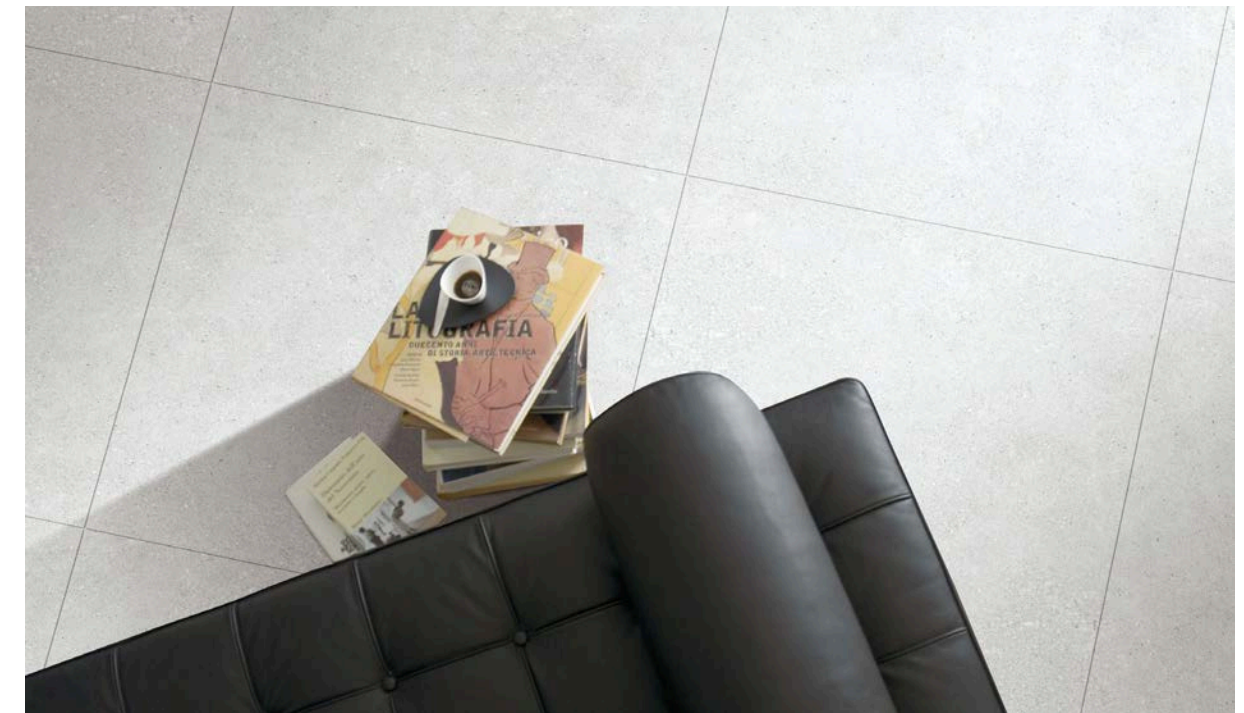
FIREPROOF



ANSI A137.1 > 0,42



SHADE VARIATION V2



GRITSTONE

COLOUR	SURFACE	600x1200mm	600x600mm
WHITE	POLISHED	IPOG26078	IPOG60078
	MATT (ANTI-SLIP)	IOG26578	IOG60578
BEIGE	POLISHED	IPOG26079	IPOG60079
	MATT (ANTI-SLIP)	IOG26579	IOG60579
LIGHT GREY	POLISHED	IPOG26080	IPOG60080
	MATT (ANTI-SLIP)	IOG26580	IOG60580
MEDIUM GREY	POLISHED	IPOG26081	IPOG60081
	MATT (ANTI-SLIP)	IOG26581	IOG60581
DARK GREY	POLISHED	IPOG26082	IPOG60082
	MATT (ANTI-SLIP)	IOG26582	IOG60582



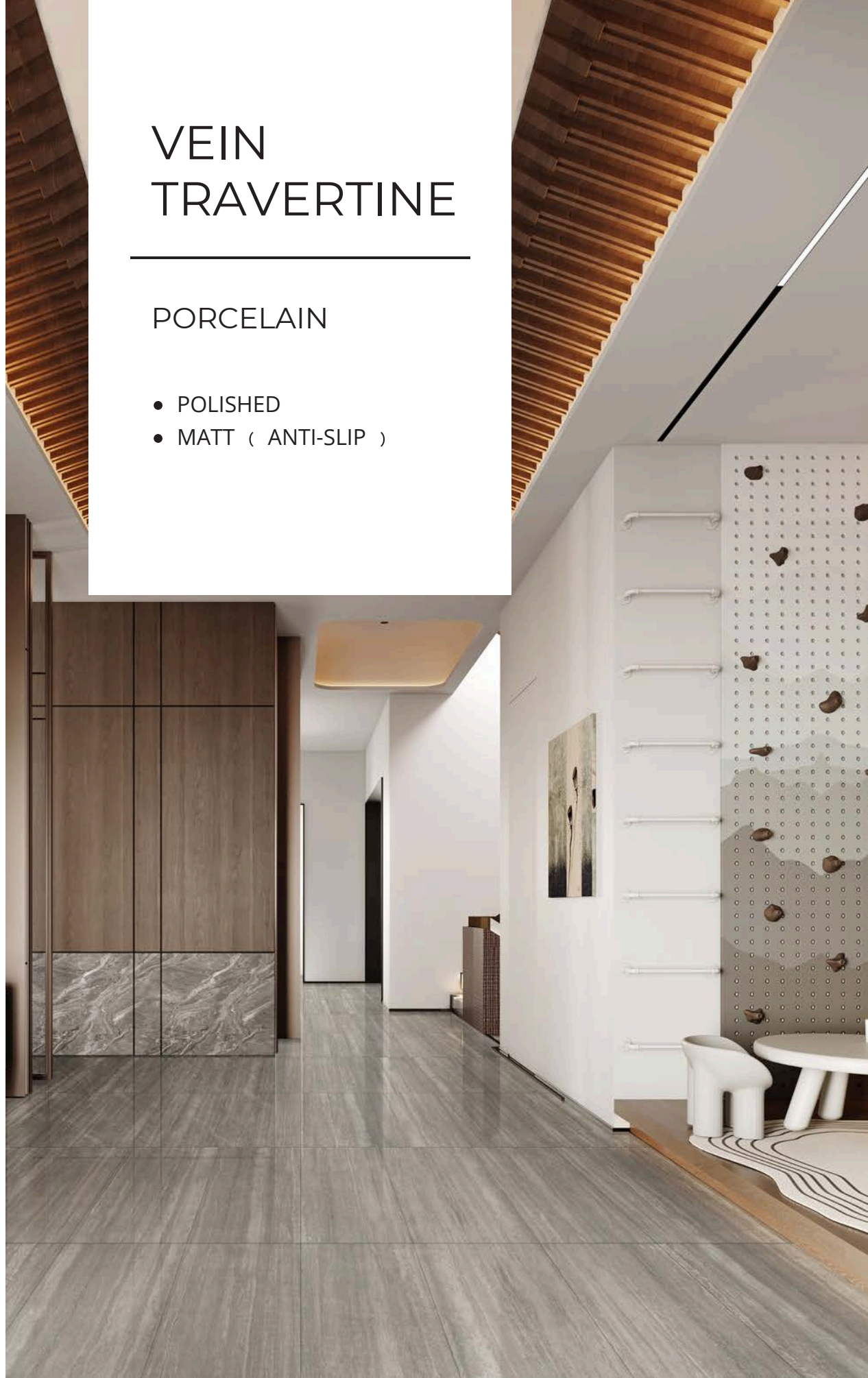
PACKING

SIZE	THICKNESS	PCS/BOX	M2/BOX	KG/BOX	CTNS/PALLET	M2/PALLET	KG/PALLET
600x1200mm	10mm	2	1.44	32.40	56	80.64	1814.40
600x600mm	9.5mm	4	1.44	31.00	36	51.84	1116.00

VEIN TRAVERTINE

PORCELAIN

- POLISHED
- MATT (ANTI-SLIP)



VEIN TRAVERTINE

BEIGE

CREMA

LIGHT GREY

MEDIUM GREY

VEIN
TRAVERTINE

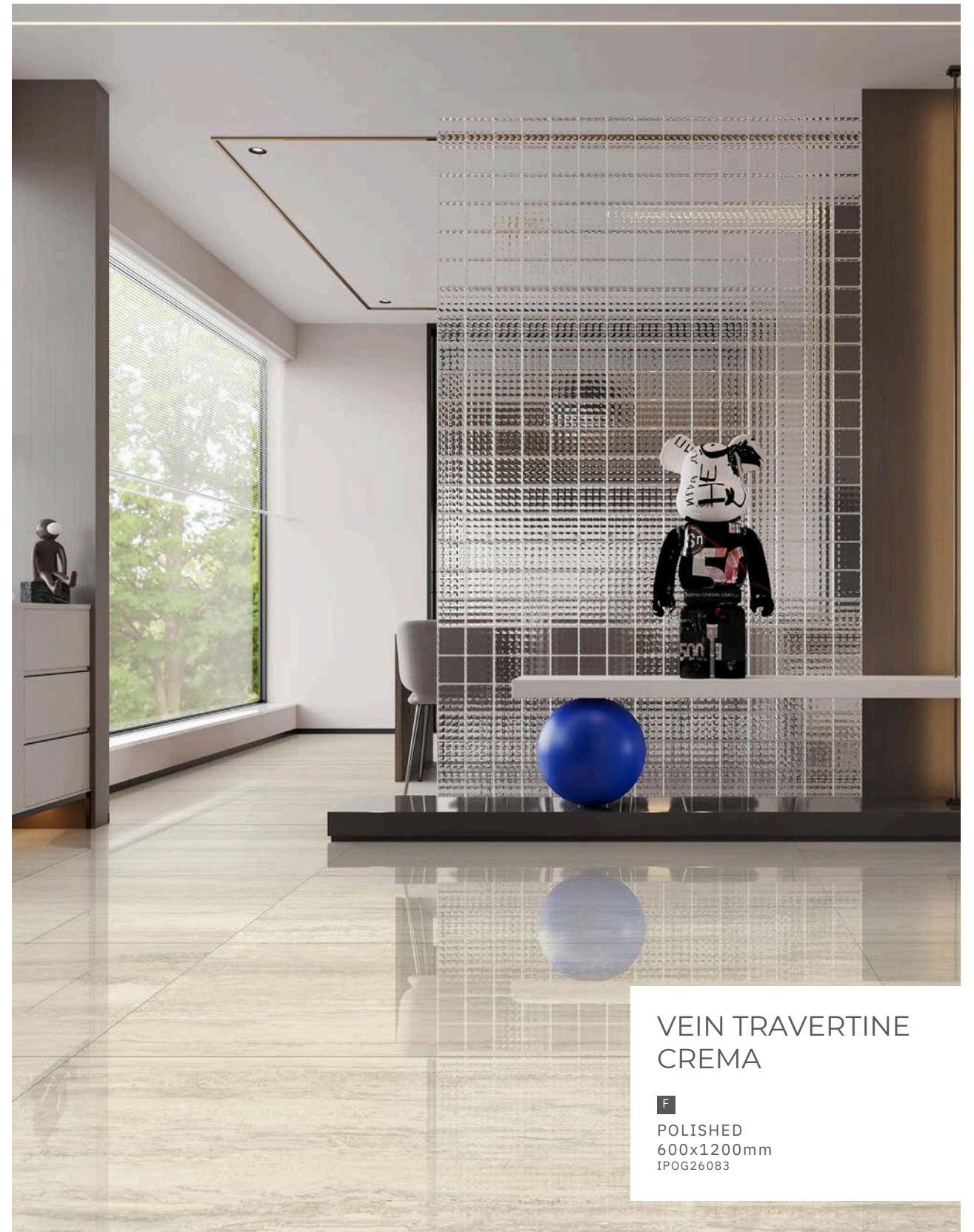
VEIN TRAVERTINE

Embrace The Linear Legacy, Where Stone's Narrative Weaves
A Tapestry Of Understated Luxury.



VEIN TRAVERTINE
BEIGE

F
POLISHED
600x1200mm
IPOG26084



VEIN TRAVERTINE
CREMA

F
POLISHED
600x1200mm
IPOG26083



VEIN TRAVERTINE
LIGHT GREY

F
POLISHED
600x1200mm
IPOG26085



VEIN TRAVERTINE
MEDIUM GREY

F
MATT (ANTI-SLIP)
600x600mm
IOG60586

VEIN
TRAVERTINE

PORCELAIN



CREMA - POLISHED



CREMA - MATT (ANTI-SLIP)



BEIGE - POLISHED



BEIGE - MATT (ANTI-SLIP)



LIGHT GREY - POLISHED



LIGHT GREY - MATT (ANTI-SLIP)



MEDIUM GREY - POLISHED



MEDIUM GREY - MATT (ANTI-SLIP)

CONFORMING TO STANDARDS

*EN 14411 / ISO 13006 APPENDIX G. GROUP BIa GL CON Eb ≤ 0.5%



BREAKING STRENGTH



FROST RESISTANCE



CHEMICALS RESISTANCE



STAIN RESISTANCE



ANTISLIP TEST RESULT
P5 (AS-4586.A)
R10 (DIN EN 16165:2023-02)



FIREPROOF



ANSI A137.1
> 0,42

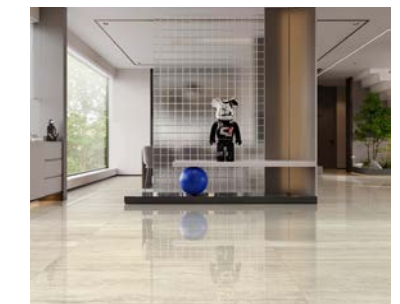


SHADE VARIATION V2



VEIN TRAVERTINE

COLOUR	SURFACE	600x1200mm	600x600mm
CREMA	POLISHED	IPOG26083	IPOG60083
	MATT (ANTI-SLIP)	IOG26583	IOG60583
BEIGE	POLISHED	IPOG26084	IPOG60084
	MATT (ANTI-SLIP)	IOG26584	IOG60584
LIGHT GREY	POLISHED	IPOG26085	IPOG60085
	MATT (ANTI-SLIP)	IOG26585	IOG60585
MEDIUM GREY	POLISHED	IPOG26086	IPOG60086
	MATT (ANTI-SLIP)	IOG26586	IOG60586



PACKING

SIZE	THICKNESS	PCS/BOX	M2/BOX	KG/BOX	CTNS/PALLET	M2/PALLET	KG/PALLET
600x1200mm	10mm	2	1.44	32.40	56	80.64	1814.40
600x600mm	9.5mm	4	1.44	31.00	36	51.84	1116.00

CROSS TRAVERTINE

PORCELAIN

- POLISHED
- MATT (ANTI-SLIP)



CROSS TRAVERTINE

CROSS TRAVERTINE

A Horizon's Gentle Curve, In Stone That Captures Serene Embrace.



CROSS TRAVERTINE
CREMA

F
MATT (ANTI-SLIP)
600x600mm
10G60574



CROSS TRAVERTINE
MEDIUM GREY

F
MATT (ANTI-SLIP)
600x1200mm
10G26577

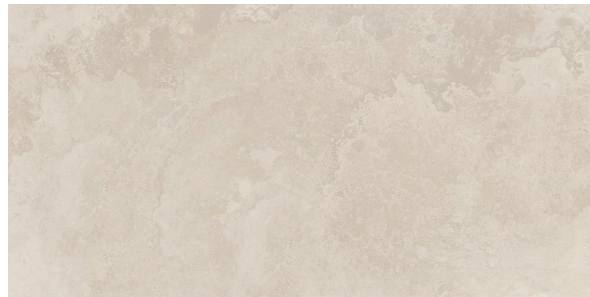
PORCELAIN



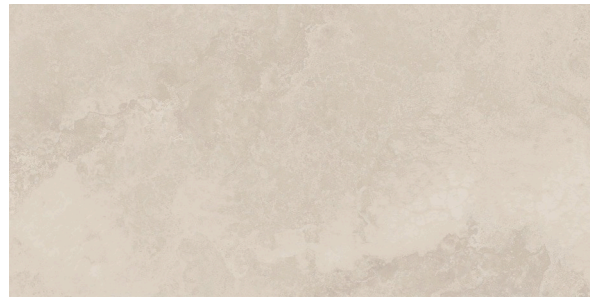
CREMA - POLISHED



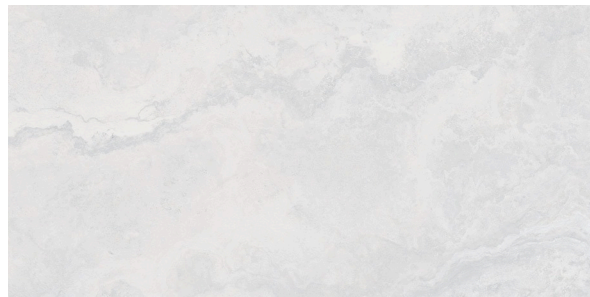
CREMA - MATT (ANTI-SLIP)



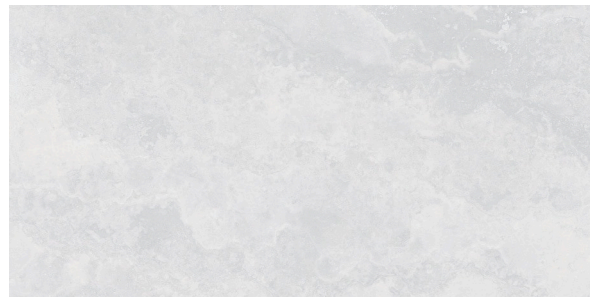
BEIGE - POLISHED



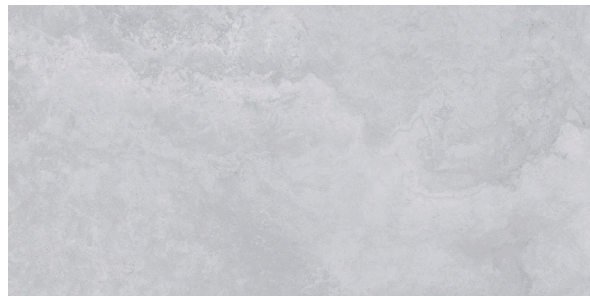
BEIGE - MATT (ANTI-SLIP)



LIGHT GREY - POLISHED



LIGHT GREY - MATT (ANTI-SLIP)



MEDIUM GREY - POLISHED



MEDIUM GREY - MATT (ANTI-SLIP)

CONFORMING TO STANDARDS

*EN 14411 / ISO 13006 APPENDIX G. GROUP BIa GL CON Eb ≤ 0.5%

BREAKING STRENGTH	FROST RESISTANCE	CHEMICALS RESISTANCE	STAIN RESISTANCE	ANTISLIP TEST RESULT P5 (AS-4586.A) R10 (DIN EN 16165:2023-02)	FIREPROOF	ANSI A137.1 > 0,42	SHADE VARIATION V2



CROSS TRAVERTINE

COLOUR	SURFACE	600x1200mm	600x600mm
CREMA	POLISHED	IPOG26074	IPOG60074
	MATT (ANTI-SLIP)	IOG26574	IOG60574
BEIGE	POLISHED	IPOG26075	IPOG60075
	MATT (ANTI-SLIP)	IOG26575	IOG60575
LIGHT GREY	POLISHED	IPOG26076	IPOG60076
	MATT (ANTI-SLIP)	IOG26576	IOG60576
MEDIUM GREY	POLISHED	IPOG26077	IPOG60077
	MATT (ANTI-SLIP)	IOG26577	IOG60577



PACKING

SIZE	THICKNESS	PCS/BOX	M2/BOX	KG/BOX	CTNS/PALLET	M2/PALLET	KG/PALLET
600x1200mm	10mm	2	1.44	32.40	56	80.64	1814.40
600x600mm	9.5mm	4	1.44	31.00	36	51.84	1116.00

STONEHENGE

PORCELAIN

- BATIK



STONEHENGE

STONEHENGE

Stands As A Timeless Wonder, Its Ancient Stones Whispering Tales Of Bygone Eras, Forever Renewed Under The Vast Open Sky.





STONEHENGE
BEIGE

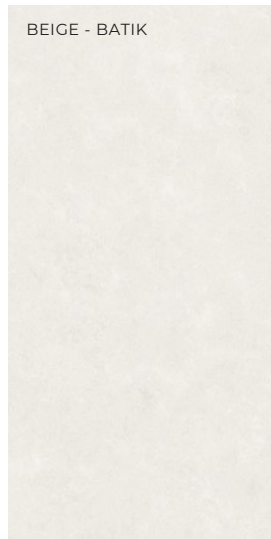
W	F
BATIK	BATIK
900x1800mm	900x1800mm
IFA1890001P	IFA1890001P



STONEHENGE
DARK GREY

W
BATIK
600x1200mm
IFA26004P

PORCELAIN



BEIGE - BATIK
IFA1890001P 900x1800mm



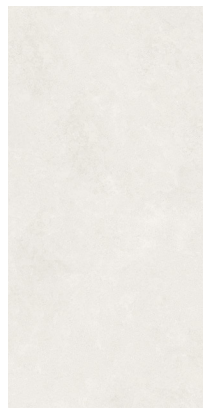
LIGHT GREY - BATIK
IFA1890002P 900x1800mm



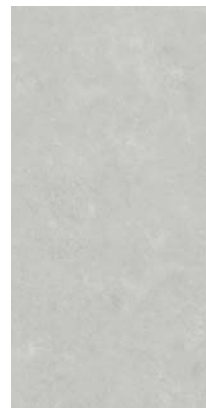
MEDIUM GREY - BATIK
IFA1890003P 900x1800mm



DARK GREY - BATIK
IFA1890004P 900x1800mm



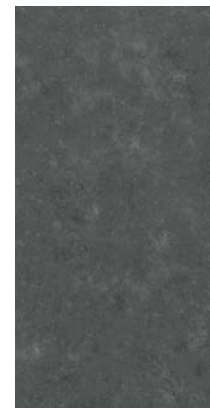
IFA26001P
600x1200mm



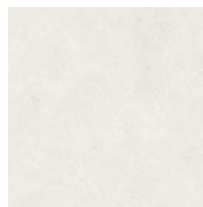
IFA26002P
600x1200mm



IFA26003P
600x1200mm



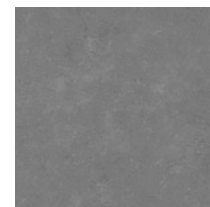
IFA26004P
600x1200mm



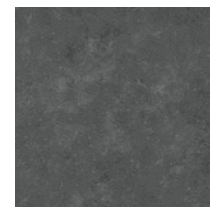
IFA60001P
600x600mm



IFA60002P
600x600mm



IFA60003P
600x600mm



IFA60004P
600x600mm

CONFORMING TO STANDARDS

*EN 14411 / ISO 13006 APPENDIX G. GROUP BIa GL CON Eb ≤ 0.5%

(IGR26093 / IGR26094 / IGR26095 0.5% - 3%)



BREAKING STRENGTH



FROST RESISTANCE



CHEMICALS RESISTANCE



STAIN RESISTANCE



RECTIFIED



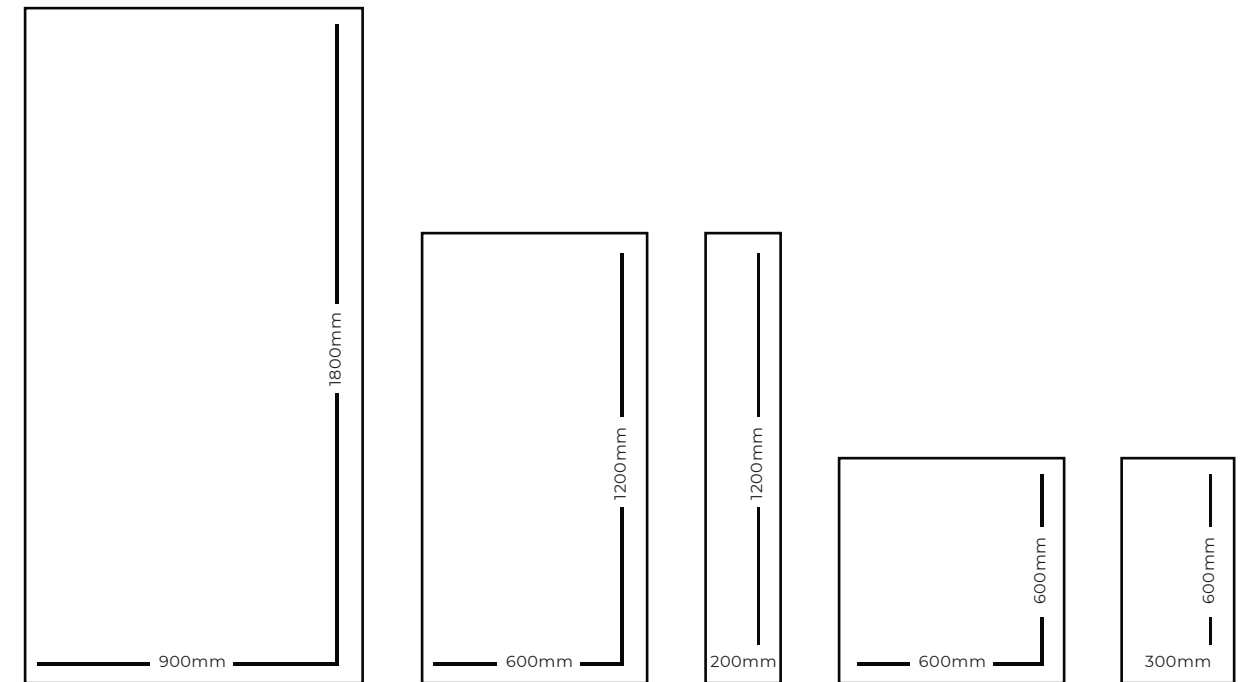
FIREPROOF



ANSI A137.1
> 0,42



SHADE VARIATION V2



COLOUR	SURFACE	900x1800mm	600x1200mm	200x1200mm	600x600mm	300x600mm
BEIGE	BATIK	IFA1890001P	IFA26001P	MB-IFA26001P	IFA60001P	MA-IFA60001P
LIGHT GREY	BATIK	IFA1890002P	IFA26002P	MB-IFA26002P	IFA60002P	MA-IFA60002P
MEDIUM GREY	BATIK	IFA1890003P	IFA26003P	MB-IFA26003P	IFA60003P	MA-IFA60003P
DARK GREY	BATIK	IFA1890004P	IFA26004P	MB-IFA26004P	IFA60004P	MA-IFA60004P

PACKING

SIZE	THICKNESS	PCS/BOX	M2/BOX	KG/BOX	CTNS/PALLET	M2/PALLET	KG/PALLET
900x1800mm	10.5mm	1	1.62	40.50	52	84.24	2106.00
600x1200mm	10mm	2	1.44	36.00	56	80.64	1814.40
200x1200mm	10mm	4	0.96	24.00	45	43.20	1080.00
600x600mm	9.5mm	4	1.44	32.00	36	51.84	1116.00
300x600mm	9.5mm	8	1.44	32.00	40	57.60	1280.00

COLUMBUS

VITRIFIED PORCELAIN

- POLISHED
- MATT



BEIGE

LIGHT GREY

MEDIUM GREY

DARK GREY

COLUMBUS

A Voyage Through Timeless Textures, Where Every Touch Is An Echo Of A Legendary Journey.



COLUMBUS
BEIGE

F
MATT
600x600mm
KOGR60089



COLUMBUS
LIGHT GREY

F
POLISHED
600x600mm
KPOGR60088

COLUMBUS



COLUMBUS
MEDIUM GREY

F
POLISHED
600x1200mm
KPOGR26087



COLUMBUS
DARK GREY

F
POLISHED
600x600mm
KPOGR60090

COLUMBUS

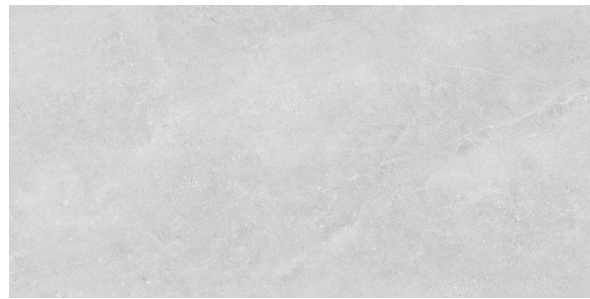
VITRIFIED PORCELAIN



BEIGE - POLISHED



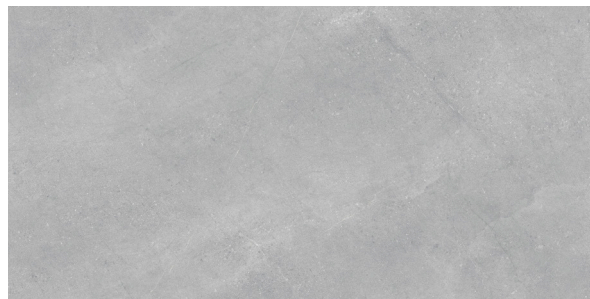
BEIGE - MATT



LIGHT GREY - POLISHED



LIGHT GREY - MATT



MEDIUM GREY - POLISHED



MEDIUM GREY - MATT



DARK GREY - POLISHED



DARK GREY - MATT

CONFORMING TO STANDARDS

*EN 14411 / ISO 13006 APPENDIX H. GROUP BIIa GL CON 0.5% Eb ≤3%

- BREAKING STRENGTH
- FROST RESISTANCE
- CHEMICALS RESISTANCE
- STAIN RESISTANCE
- RECTIFIED
- FIREPROOF
- ANSI A137.1 > 0,42
- SHADE VARIATION V2



COLOUR	SURFACE	600x1200mm	600x600mm
BEIGE	POLISHED	KPOGR26089	KPOGR60089
	MATT	KOGR26089	KOGR60089
LIGHT GREY	POLISHED	KPOGR26088	KPOGR60088
	MATT	KOGR26088	KOGR60088
MEDIUM GREY	POLISHED	KPOGR26087	KPOGR60087
	MATT	KOGR26087	KOGR60087
DARK GREY	POLISHED	KPOGR26090	KPOGR60090
	MATT	KOGR26090	KOGR60090



PACKING

SIZE	THICKNESS	PCS/BOX	M2/BOX	KG/BOX	CTNS/PALLET	M2/PALLET	KG/PALLET
600x1200mm	10mm	2	1.44	32.40	56	80.64	1814.40
600x600mm	9.5mm	4	1.44	31.00	36	51.84	1116.00

LOMBARDIA

VITRIFIED PORCELAIN

- MATT



WHITE

LIGHT GREY

MEDIUM GREY

DARK GREY

LOMBARDIA

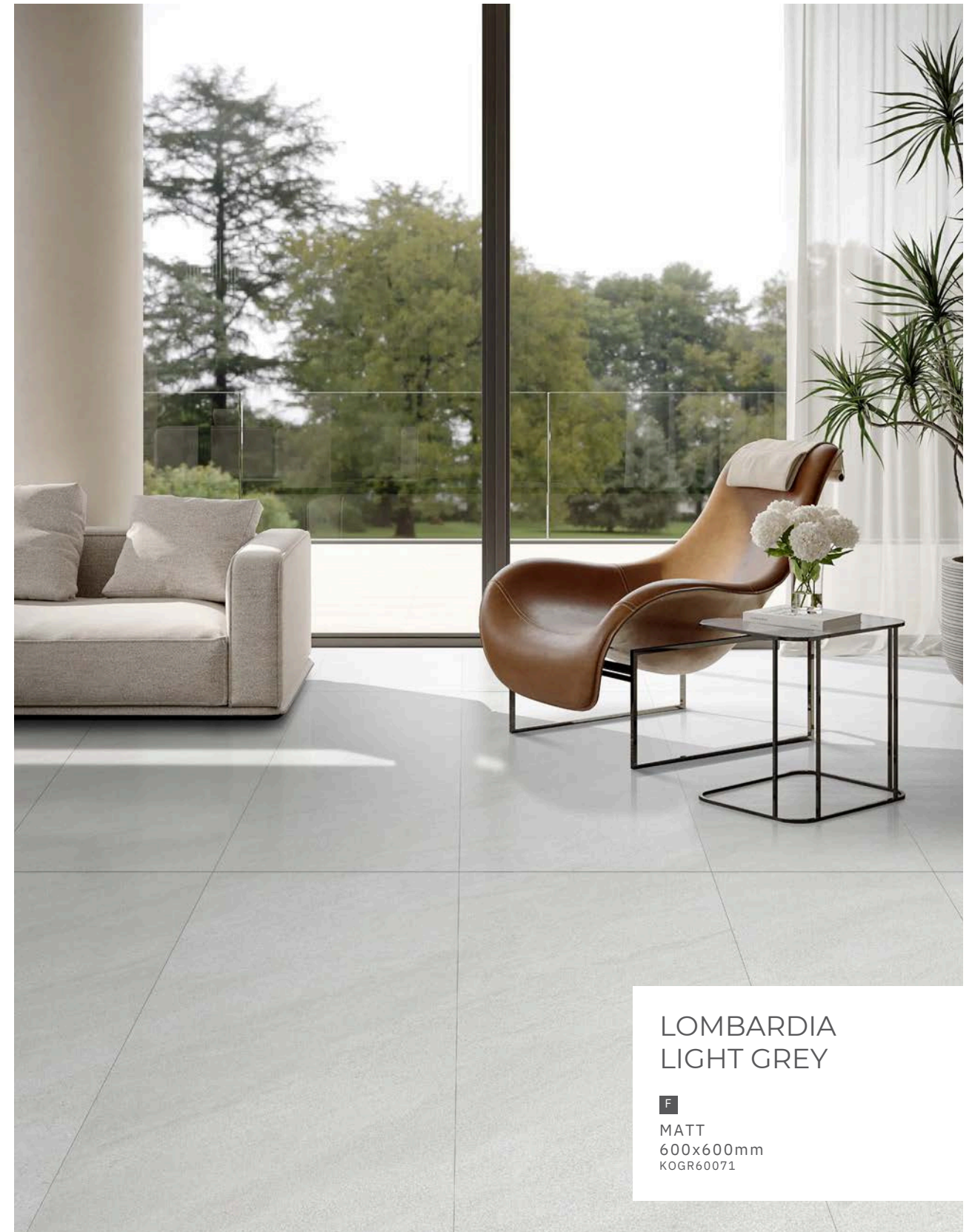
Blends Delicate Textures With Rugged Charm. Where Fingertips Dance, Tracing Whispers Of Mountain Peaks.

LOMBARDIA



LOMBARDIA
WHITE

F
MATT
600x600mm
KOGR60070



LOMBARDIA
LIGHT GREY

F
MATT
600x600mm
KOGR60071



LOMBARDIA
MEDIUM GREY

F
MATT
600x600mm
KOGR60072



LOMBARDIA
DARK GREY

F
MATT
600x600mm
KOGR60073

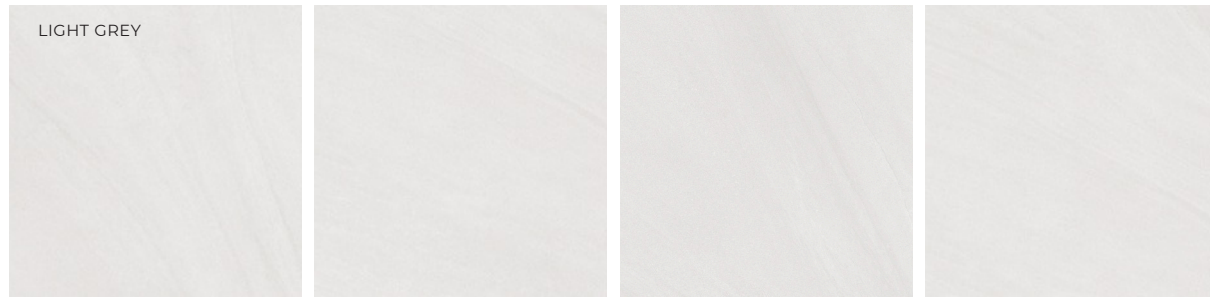
LOMBARDIA



WHITE

KOGR60070 600x600mm

12 PATTERNS



LIGHT GREY

KOGR60071 600x600mm

12 PATTERNS



MEDIUM GREY

KOGR60072 600x600mm

12 PATTERNS







DARK GREY

KOGR60073 600x600mm

12 PATTERNS

CONFORMING TO STANDARDS

*EN 14411 / ISO 13006 APPENDIX G. GROUP BIa GL CON Eb 0.5%

							
BREAKING STRENGTH	FROST RESISTANCE	CHEMICALS RESISTANCE	STAIN RESISTANCE	ANTISLIP TEST RESULT P5 (AS-4586.A) R10 (DIN EN 16165:2023-02)	FIREPROOF	GLOSS UNITS	SHADE VARIATION V1



COLOUR	SURFACE	600x600mm
WHITE	MATT	KOGR60070
LIGHT GREY	MATT	KOGR60071
MEDIUM GREY	MATT	KOGR60072
DARK GREY	MATT	KOGR60073



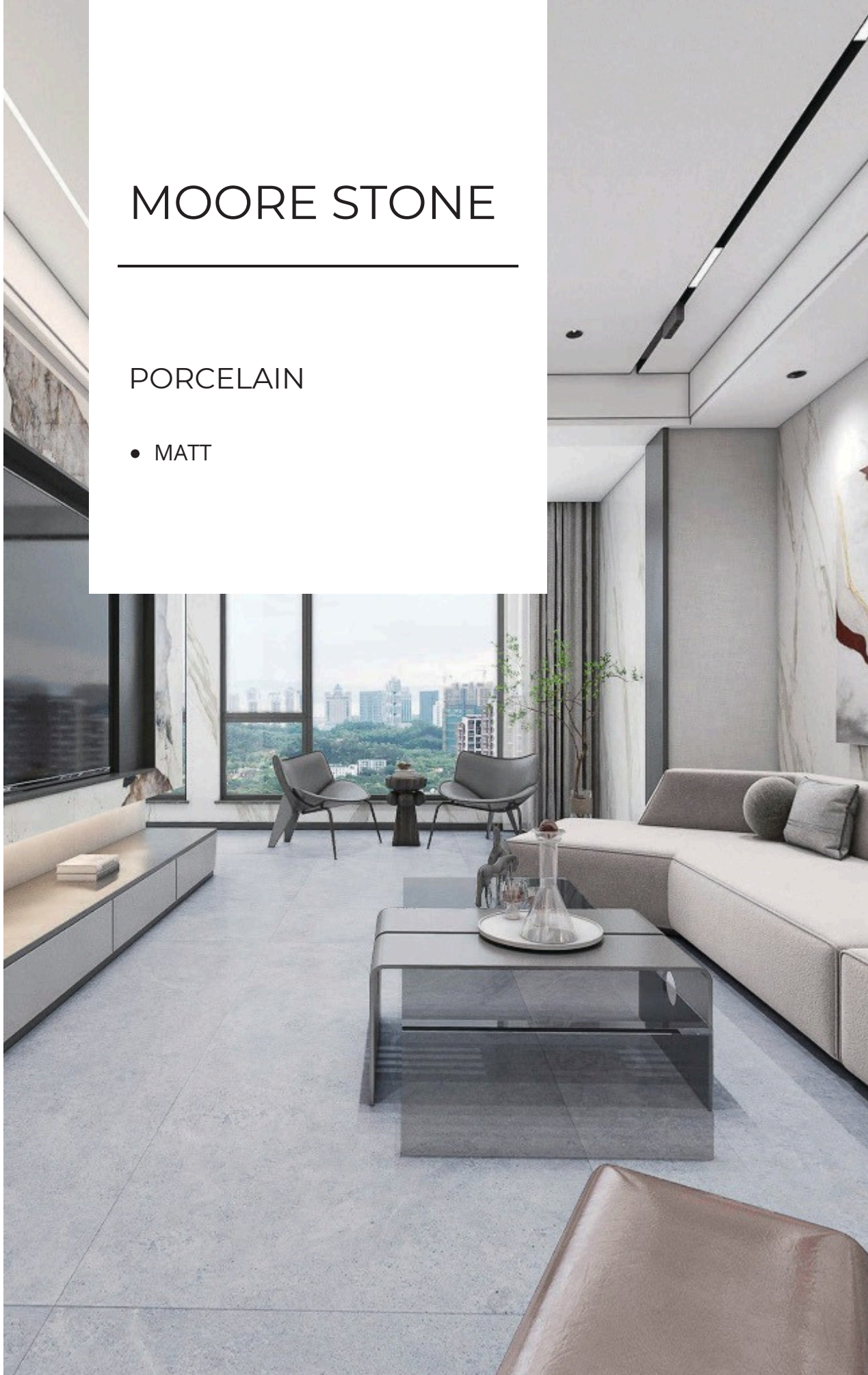
PACKING

SIZE	THICKNESS	PCS/BOX	M2/BOX	KG/BOX	CTNS/PALLET	M2/PALLET	KG/PALLET
600x600mm	9.5mm	4	1.44	31.00	36	51.84	1116.00

MOORE STONE

PORCELAIN

- MATT



BEIGE

LIGHT GREY

DARK GREY

MOORE STONE
Transform Your Space with
Both Style and Convenience
to Your Home Décor.



MOORE STONE
BEIGE

F
MATT
900x1800mm
IGR60005



MOORE STONE
DARK GREY

F
MATT
600x600mm
IGR60004

PORCELAIN



IJ1890005 900x1800mm



IJ1890006 900x1800mm



IJ1890007 900x1800mm



IG26093 600x1200mm



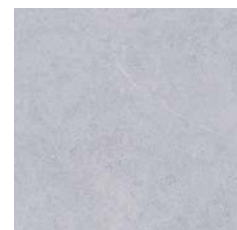
IG26094 600x1200mm



IG26095 600x1200mm



IGR60002 600x600mm



IGR60003 600x600mm



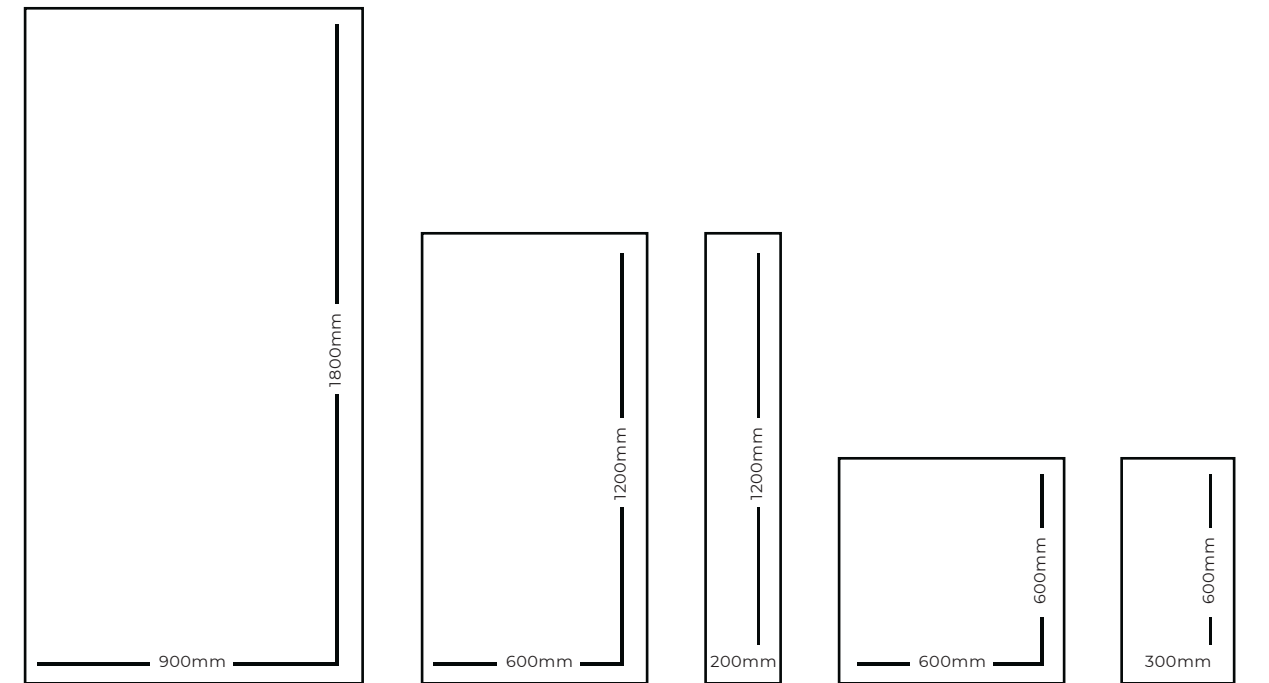
IGR60004 600x600mm

CONFORMING TO STANDARDS

*EN 14411 / ISO 13006 APPENDIX G. GROUP BIa GL CON Eb ≤ 0.5%

(IGR26093 / IGR26094 / IGR26095 0.5% - 3%)

BREAKING STRENGTH
 FROST RESISTANCE
 CHEMICALS RESISTANCE
 STAIN RESISTANCE
 RECTIFIED
 FIREPROOF
 ANSI A137.1 > 0,42
 SHADE VARIATION V2



COLOUR	SURFACE	900x1800mm	600x1200mm	200x1200mm	600x600mm	300x600mm
BEIGE	MATT	IJ1890005	IG26093	MB-IG26093	IGR60002	MA-IGR60002
LIGHT GREY	MATT	IJ1890006	IG26094	MB-IG26094	IGR60003	MA-IGR60003
DARK GREY	MATT	IJ1890007	IG26095	MB-IG26095	IGR60004	MA-IGR60004

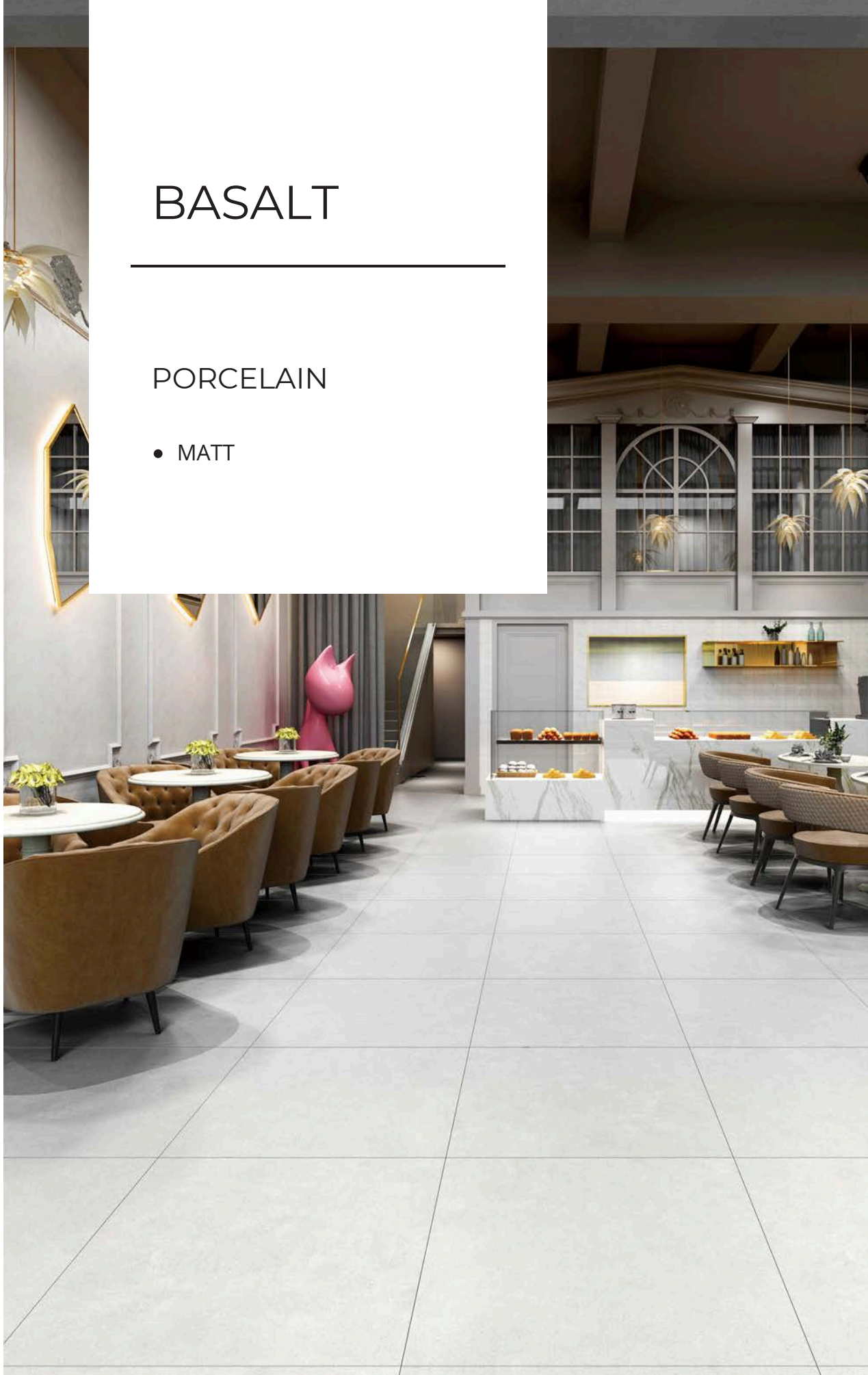
PACKING

SIZE	THICKNESS	PCS/BOX	M2/BOX	KG/BOX	CTNS/PALLET	M2/PALLET	KG/PALLET
900x1800mm	9.5mm	1	1.62	34.30	52	84.24	1783.60
600x1200mm	10mm	2	1.44	32.40	56	80.64	1814.40
200x1200mm	10mm	4	0.96	21.60	45	43.20	972.00
600x600mm	9.5mm	4	1.44	31.00	36	51.84	1116.00
300x600mm	9.5mm	8	1.44	31.00	40	57.60	1240.00

BASALT

PORCELAIN

- MATT

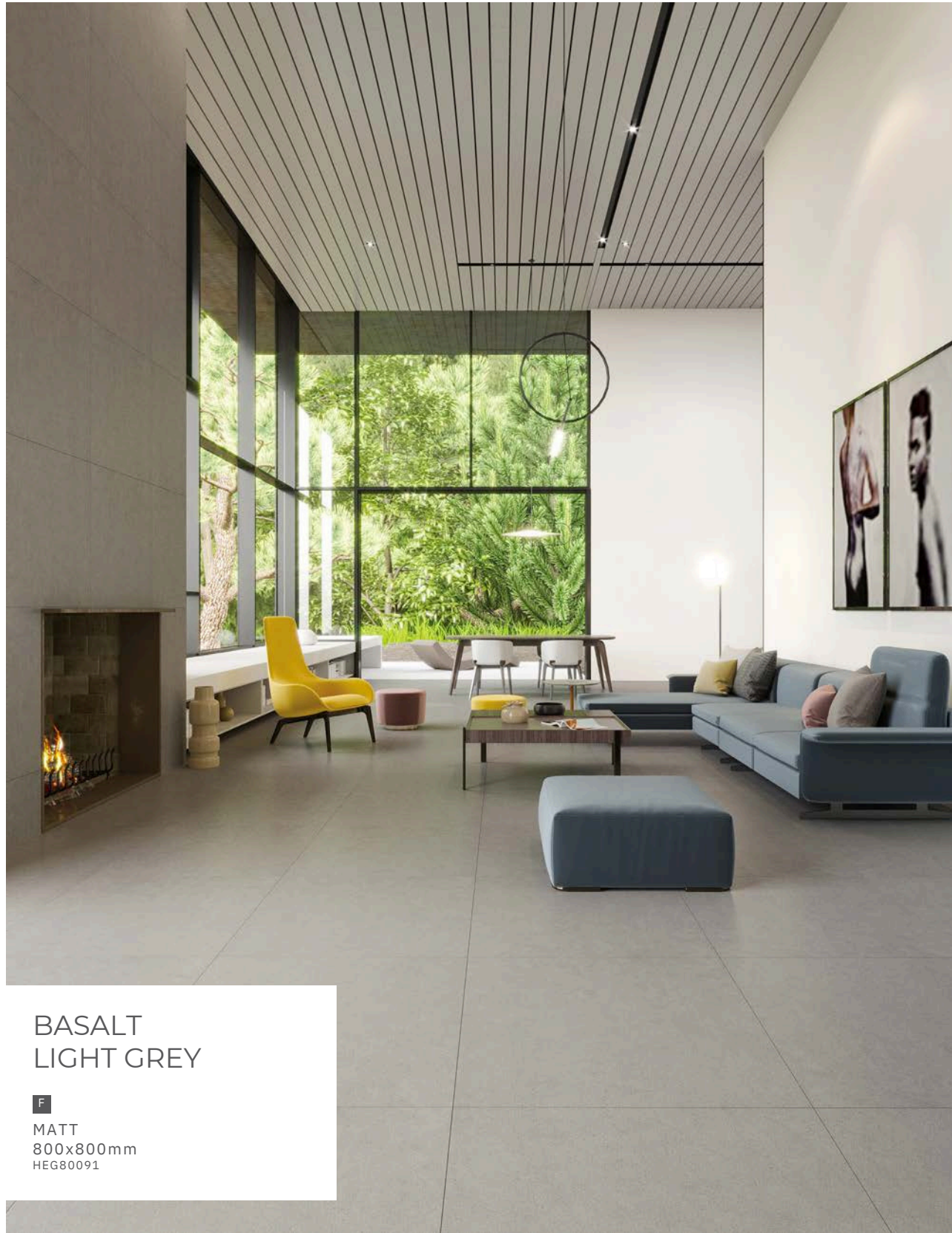


WHITE

LIGHT GREY

MEDIUM GREY

BASALT
Forms When Lava Reaches
The Earth's Surface At A
Volcano Or Mid Ocean Ridge,
Enjoying The Power Of Mighty
Nature.



BASALT
LIGHT GREY

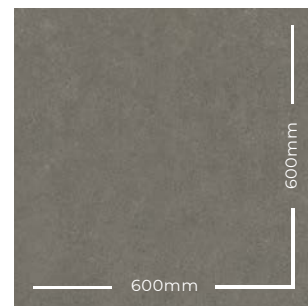
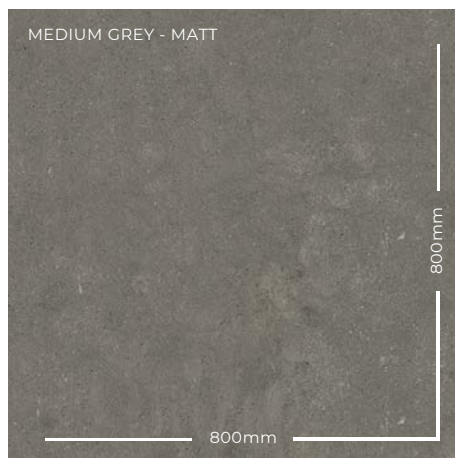
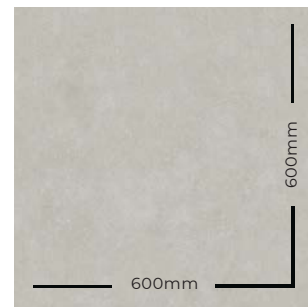
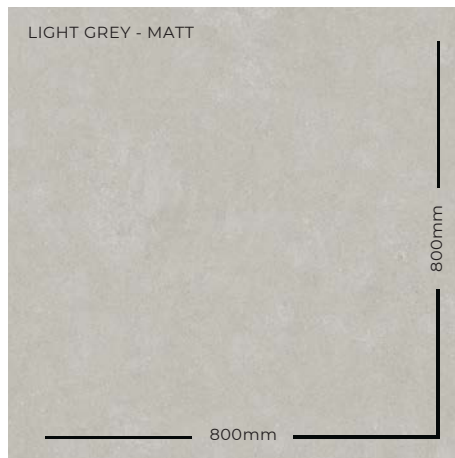
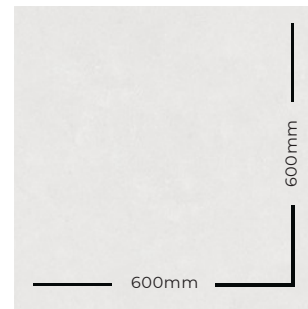
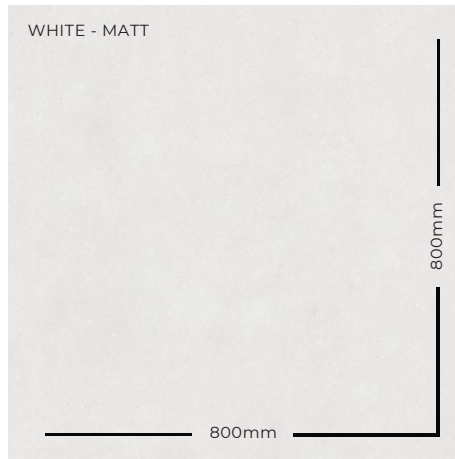
F
MATT
800x800mm
HEG80091



BASALT
MEDIUM GREY

F
MATT
600x600mm
HEG60093

PORCELAIN



CONFORMING TO STANDARDS

*EN14411/ISO13006APPENDIXG.GROUP BIa GL CON Eb ≤ 0.5% (HGR60092 / HGR60091 / HGR60093 0.5% - 3%)

- BREAKING STRENGTH
- FROST RESISTANCE
- CHEMICALS RESISTANCE
- STAIN RESISTANCE
- RECTIFIED
- FIREPROOF
- ANSI A137.1 > 0,42
- SHADE VARIATION V2



COLOUR	SURFACE	800x800mm	400x800mm	600x600mm	300x600mm
WHITE	MAT	HEG80092	MA-HEG80092	HGR60092	MA-HGR60092
LIGHT GREY	T	HEG80091	MA-HEG80091	HGR60091	MA-HGR60091
MEDIUM GREY	MAT	HEG80093	MA-HEG80093	HGR60093	MA-HGR60093

PACKING SIZE	THICKNESS	PCS/BOX	M2/BOX	KG/BOX	CTNS/PALLET	M2/PALLET	KG/PALLET
800x800mm	10mm	3	1.92	45.00	28	53.76	1260.00
400x800mm	10mm	4	1.28	30.00	40	51.20	1200.00
600x600mm	9.5mm	4	1.44	31.00	36	51.84	1116.00
300x600mm	9.5mm	8	1.44	31.00	40	57.60	1240.00

PORCELAIN TILE



CONFORMING TO STANDARDS

*EN 14411 / ISO 13006 APPENDIX G. GROUP BIa GL CON Eb ≤ 0.5%

PHYSICAL PROPERTIES	TESTING METHOD	REFERENCE STANDARD	PRODUCT VALUES
LENGTH		±0.6%, ±2.0mm	±0.06%, ±0.6mm
WIDTH	EN ISO 10545-2:2018	±0.6%, ±2.0mm	±0.06%, ±0.6mm
THICKNESS		±5%, ±0.5mm	±1.2%, ±0.1mm
WATER ABSORPTION	EN ISO 10545-3:2018	Eb ≤ 0.5%	Eb ≤ 0.09%
BREAKING STRENGTH (N)		≥ 1300	S ≥ 2000
MODULUS OF RUPTURE (Mpa) , NOT APPLICABLE TO TILES WITH BREAKING STRENGTH ≥ 3000N	EN ISO 10545-4:2019	≥ 35	R ≥ 40
ABRASION RESISTANCE	EN ISO 10545-7:1998 / AC:1999	REPORT VALUE	CLASS 2, 600 CYCLES / CLASS 4, 2100 CYCLES
THERMAL SHOCK RESISTANCE	EN ISO 10545-9:2013	PASS ACCORDING TO EN ISO 10545-9:2013	FULLY RESISTANCE
CRAZING RESISTANCE (GLAZED TILES)	EN ISO 10545-11:1996	PASS ACCORDING TO EN ISO 10545-11:1996	FULLY RESISTANCE
SLIPPERINESS	DIN 51130:2014	DECLARED VALUE	R9 / R10 / R11
REACTION TO FIRE	--	CLASS A1 OR A1FL	WALL - CLASS A1; FLOOR - CLASS A1fl
RESISTANCE TO STAINING	EN ISO 10545-14:2015	MINIMUM CLASS 3	CLASS 5
RESISTANCE TO HOUSEHOLD CHEMICALS AND SWIMMING POOL SALTS		MINIMUM CLASS B	A
RESISTANCE TO LOW CONCENTRATIONS OF ACIDS AND ALKALIS	EN ISO 10545-13:2016	DECLARED VALUE	LA
RESISTANCE TO LOW CONCENTRATIONS OF ACIDS AND ALKALIS		DECLARED VALUE	HA

* EXCLUDING HYDROFLUORIC ACID AND DERIVATIVES

VITRIFIED PORCELAIN TILE



CONFORMING TO STANDARDS

*EN 14411 / ISO 13006 APPENDIX H. GROUP BIb GL CON 0.5% < Eb ≤ 3%

PHYSICAL PROPERTIES	TESTING METHOD	REFERENCE STANDARD	PRODUCT VALUES
LENGTH		±0.3%, ±1.0mm	±0.02%, ±0.1mm
WIDTH	EN ISO 10545-2:2018	±0.3%, ±1.0mm	±0.02%, ±0.1mm
THICKNESS		±5%, ±0.5mm	±1.0%, ±0.1mm
WATER ABSORPTION	EN ISO 10545-3:2018	0.5% < Eb ≤ 3%	2.9%
BREAKING STRENGTH (N)		≥ 1100	S ≥ 2000 ≥ 1650
MODULUS OF RUPTURE (Mpa) , NOT APPLICABLE TO TILES WITH BREAKING STRENGTH ≥ 3000N	EN ISO 10545-4:2019	≥ 35 ≥ 30	R ≥ 40 ≥ 33
ABRASION RESISTANCE	EN ISO 10545-7:1998 / AC:1999	REPORT VALUE	CLASS 2, 600 CYCLES / CLASS 4, 2100 CYCLES
THERMAL SHOCK RESISTANCE	EN ISO 10545-9:2013	PASS ACCORDING TO EN ISO 10545-9:2013	FULLY RESISTANCE
CRAZING RESISTANCE (GLAZED TILES)	EN ISO 10545-11:1996	PASS ACCORDING TO EN ISO 10545-11:1996	FULLY RESISTANCE
SLIPPERINESS	DIN 51130:2014	DECLARED VALUE	R9 / R10 / R11
REACTION TO FIRE	--	CLASS A1 OR A1FL	WALL - CLASS A1; FLOOR - CLASS A1fl
RESISTANCE TO STAINING	EN ISO 10545-14:2015	MINIMUM CLASS 3	CLASS 5
RESISTANCE TO HOUSEHOLD CHEMICALS AND SWIMMING POOL SALTS		MINIMUM CLASS B	A
RESISTANCE TO LOW CONCENTRATIONS OF ACIDS AND ALKALIS	EN ISO 10545-13:2016	DECLARED VALUE	LA
RESISTANCE TO LOW CONCENTRATIONS OF ACIDS AND ALKALIS		DECLARED VALUE	HA

* EXCLUDING HYDROFLUORIC ACID AND DERIVATIVES