

ANTI SLIP DECKING TILES

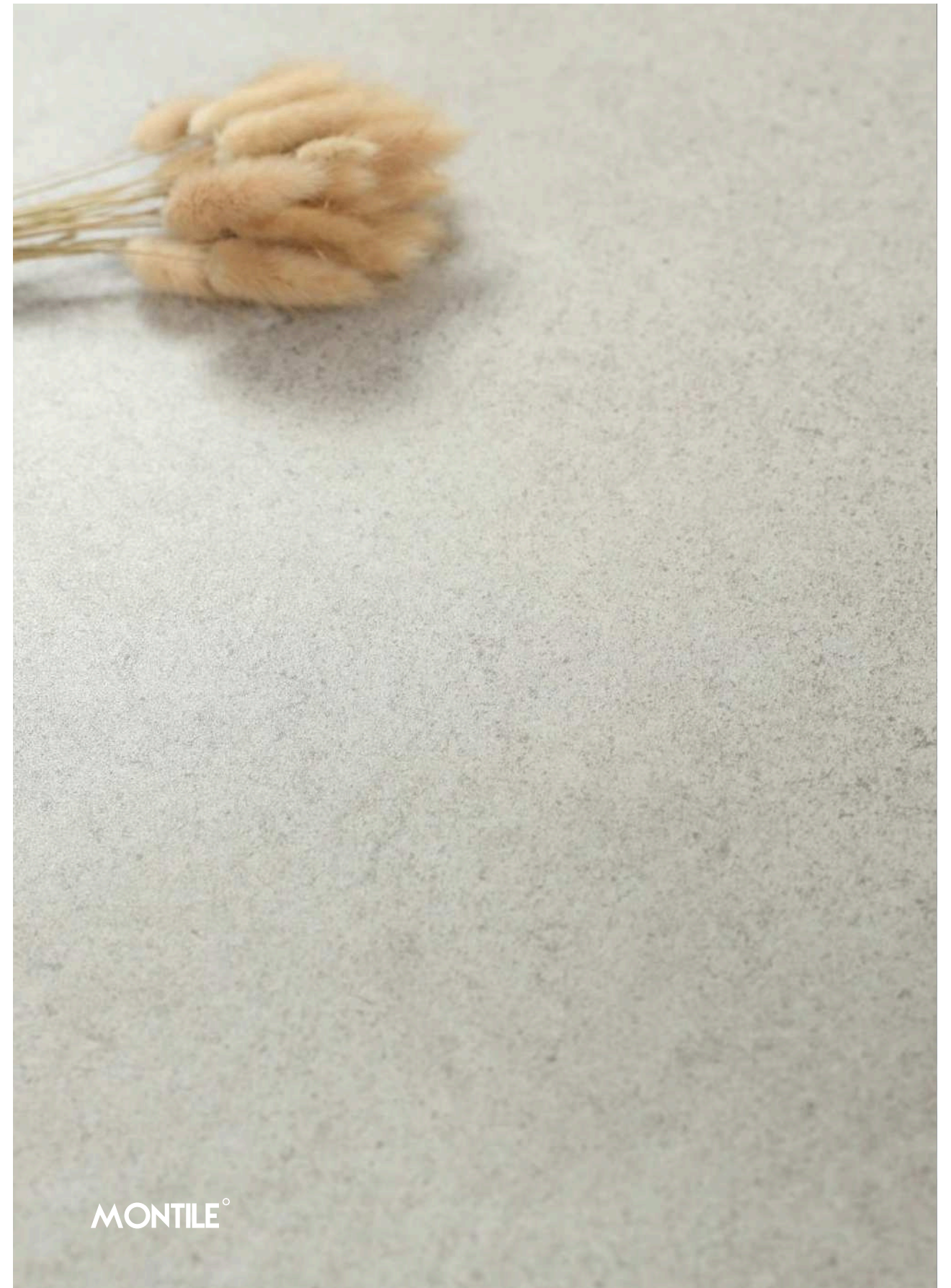
**MONTILE SDN BHD**

NO.4, Jalan TSB 3,  
Taman Industri Sungai Buloh,  
47000 Sungai Buloh, Selangor.  
Tel : +603 6150 6307

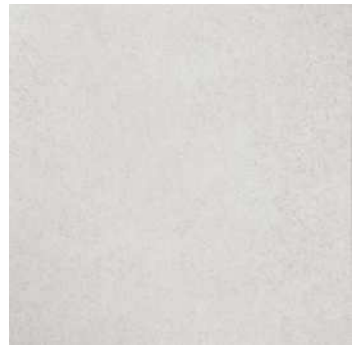
**MONTILE<sup>o</sup>**

## Anti slip tile

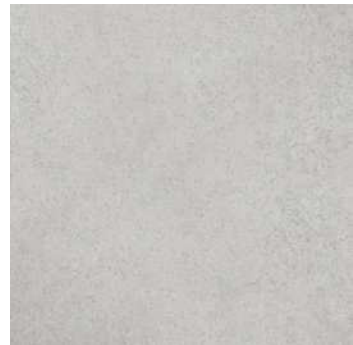
Lime Stone is a high quality rock mined in Bloomington, Indiana, USA.  
As the mottled emulsifier slowly dissolves and penetrates,  
Microbes and rock molecules have a gorgeous encounter.  
Lyme Stone recorded this long and magical moment on the brick surface.  
It was a time of sedimentation of marine microorganisms for thousands of years.



Anti-Slip Tiles - 9.5 mm Thickness  
Slip Resistance Rating: R11-R13



RF601-R13



RF602-R11



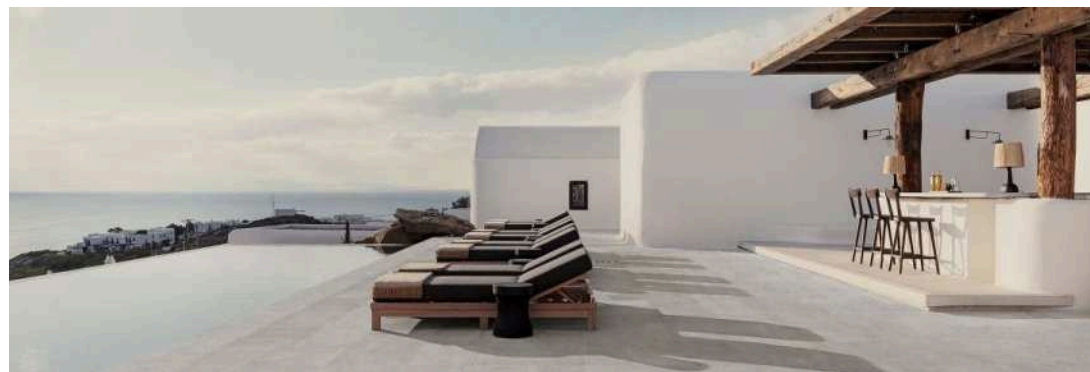
RS605-R11



LM665-R13



LM666-R11



Size



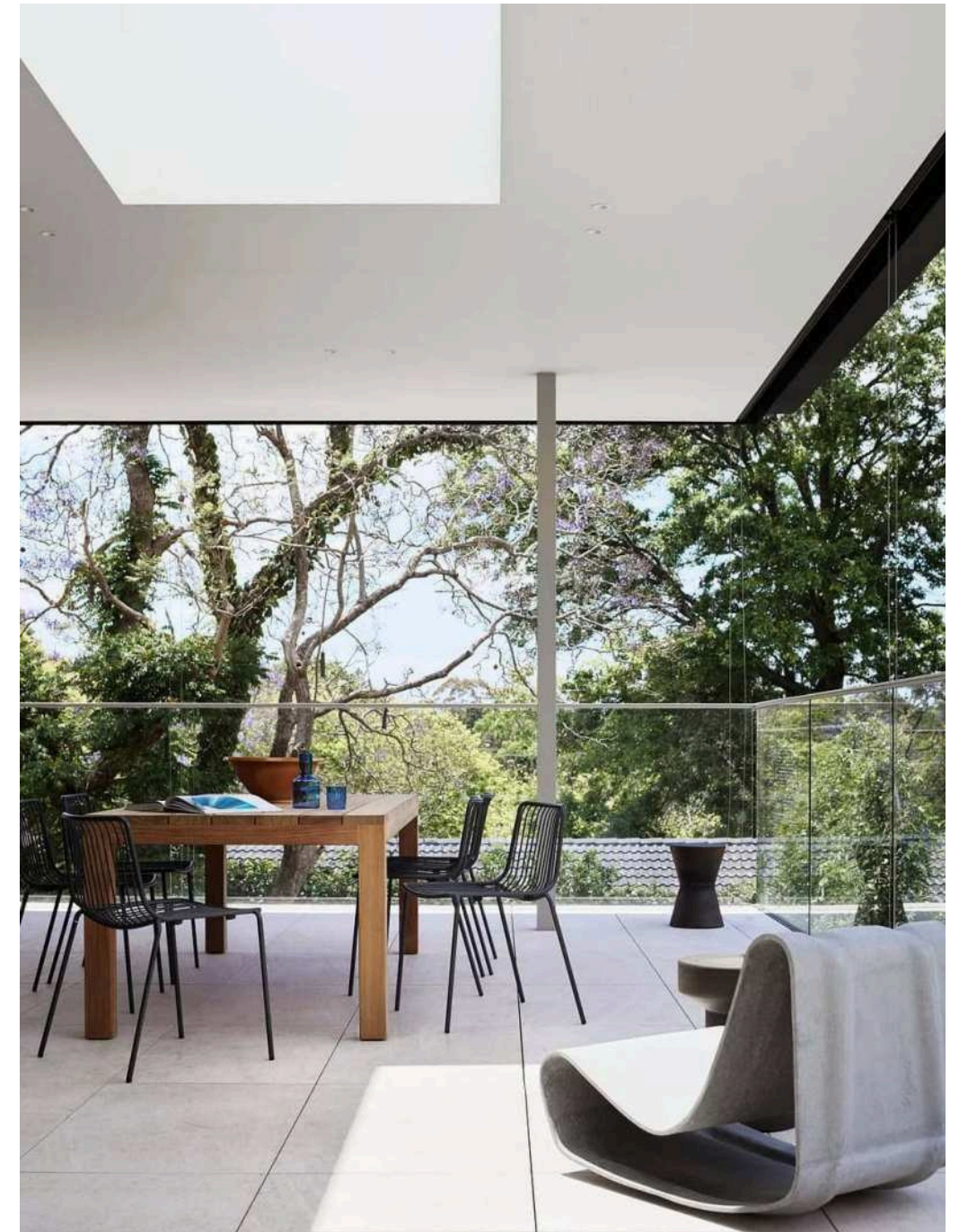
60x60x0.95cm  
24" x 24"



Anti-Slip



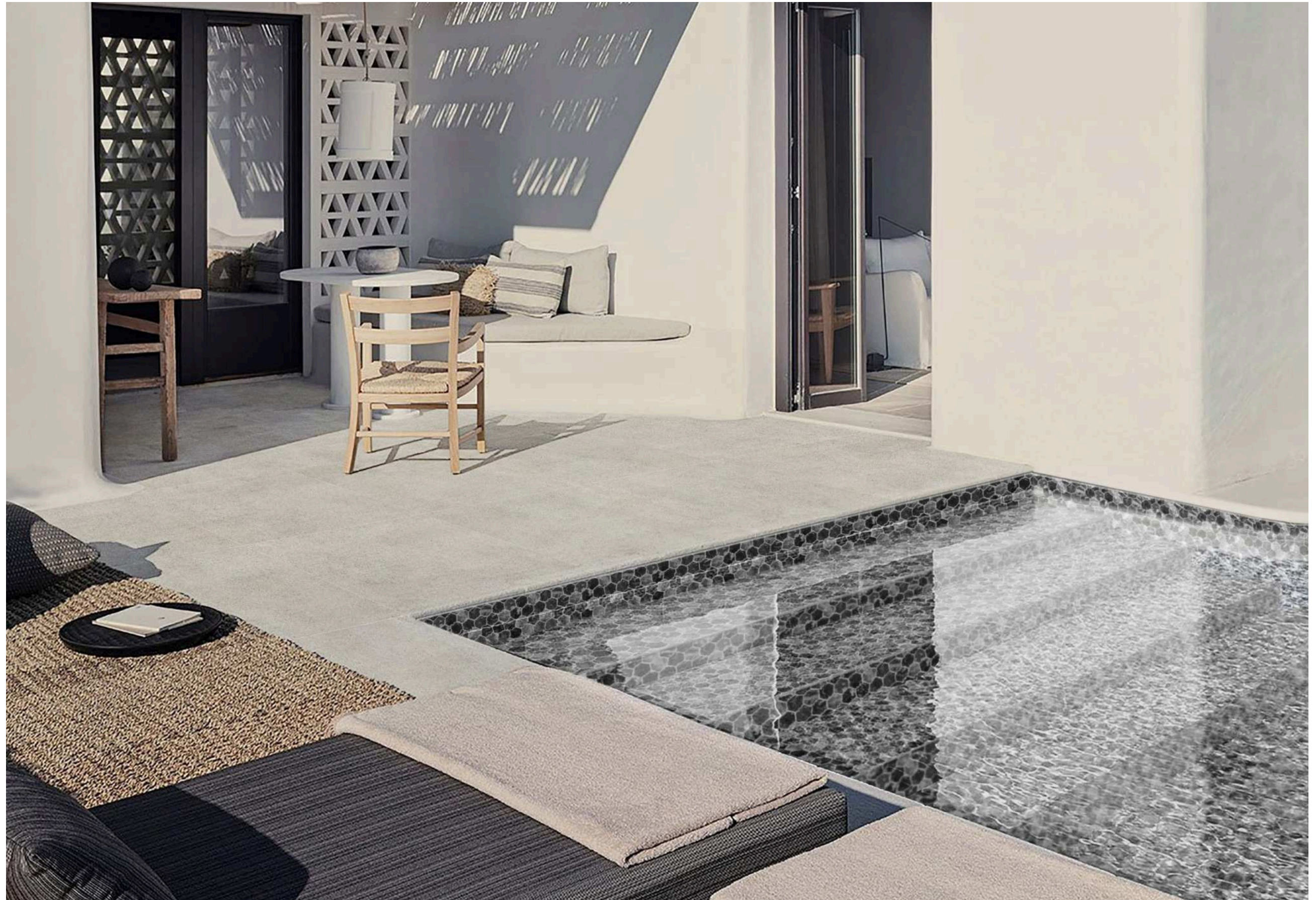
Schattierung



RF601 60X60X0.95CM



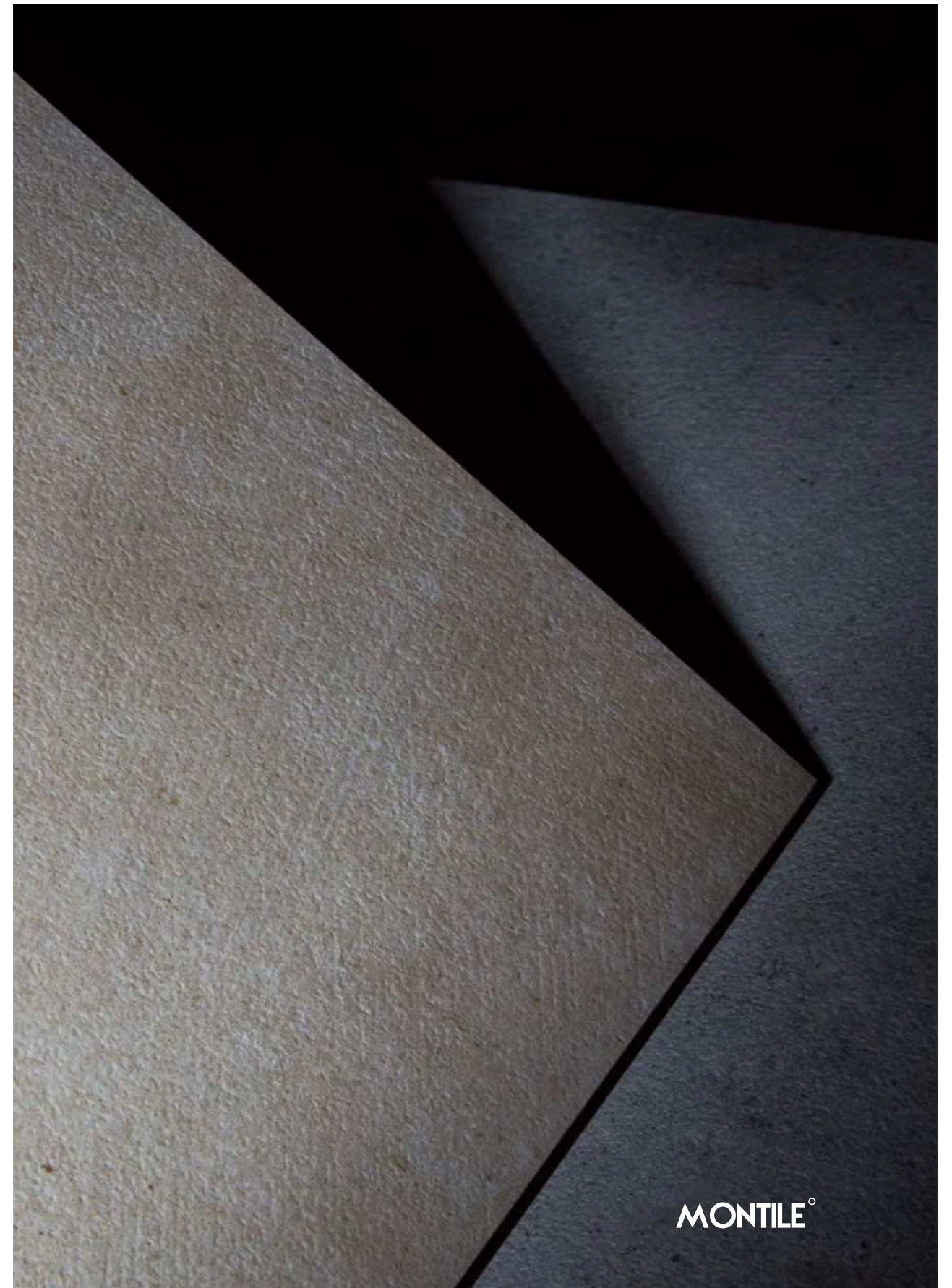
LM665  
60x60x0.95cm 24"x24"



# Lime

## Full-Body High-Performance, Extra-Thick Anti-Slip Tiles

Lime Stone is a high quality rock mined in Bloomington, Indiana, USA.  
As the mottled emulsifier slowly dissolves and penetrates,  
Microbes and rock molecules have a gorgeous encounter.  
Lyme Stone recorded this long and magical moment on the brick surface.  
It was a time of sedimentation of marine microorganisms for thousands of years.

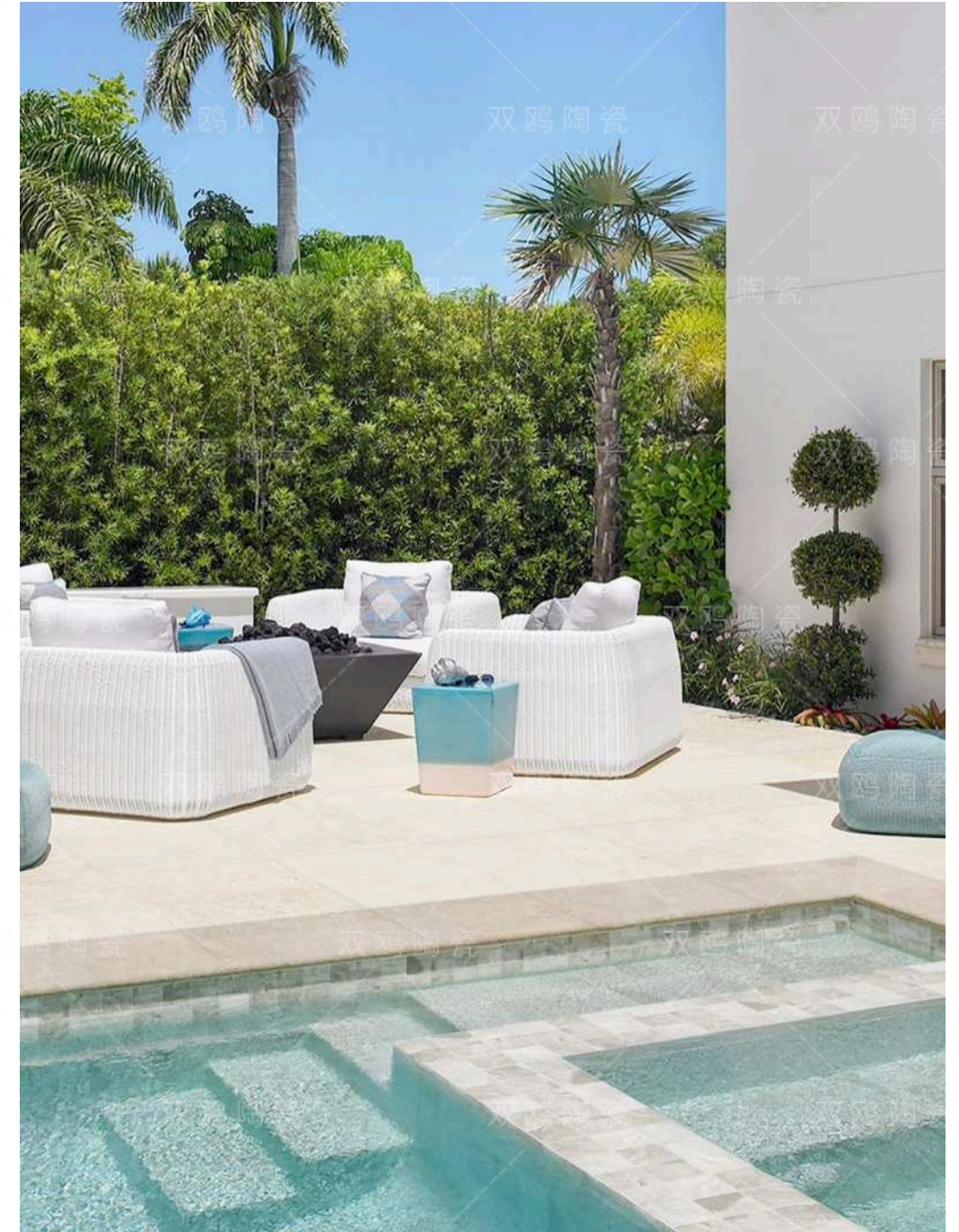


MONTILE<sup>o</sup>

Quartz . LM Series  
Limestone  
Slip Resistance Rating: R13



QU2321AR 30x120x2cm



Size



60x60x2cm  
24"x 24"



60x120x1.8cm  
24"x 28"



30x120x2cm  
12"x 28"



Anti-Slip

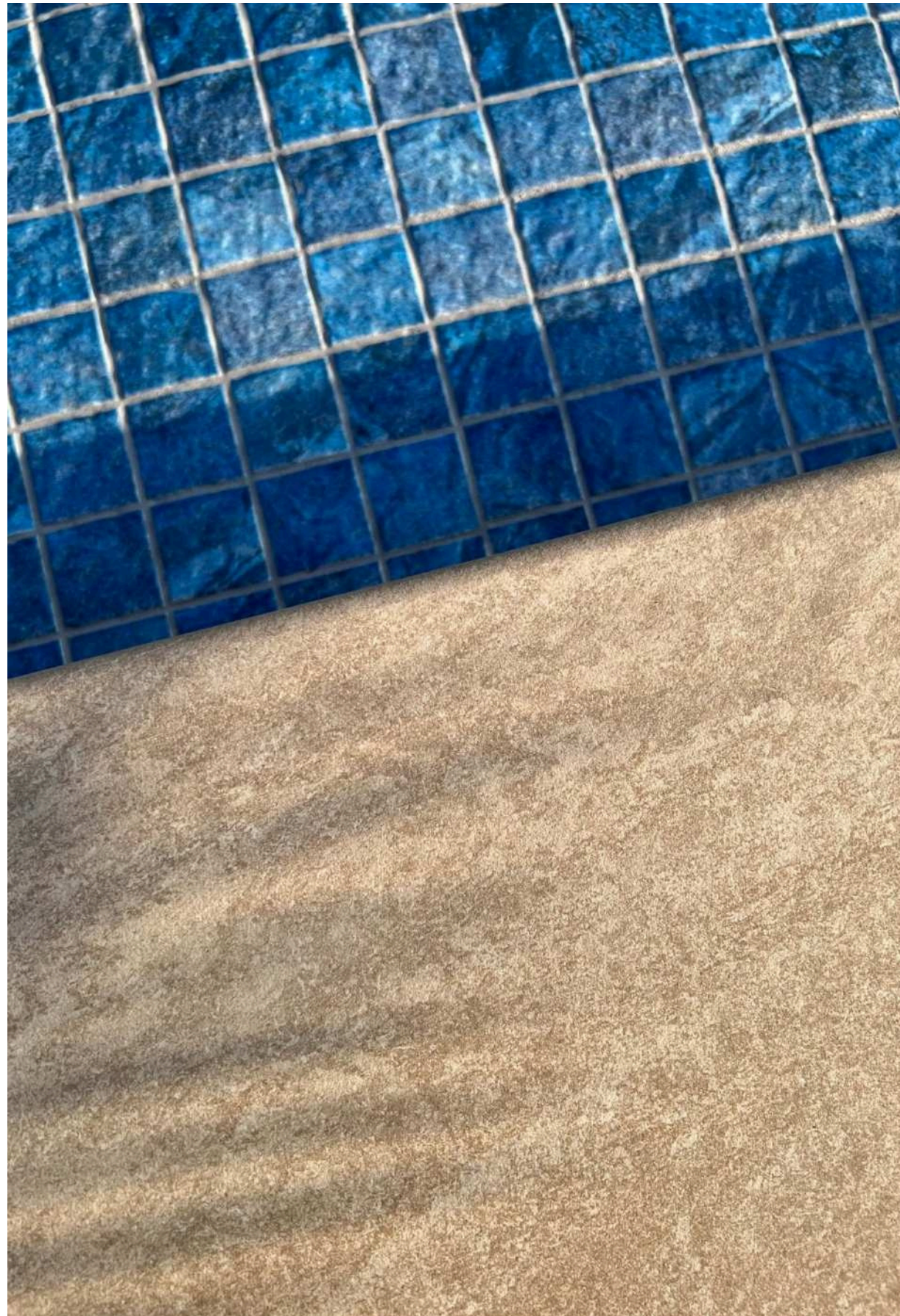


Schattierung

LM2661 60X60X2CM



QU2321AR  
30x120x2cm 12"x28"



QU2321AR  
30x120x2cm 12"x28"

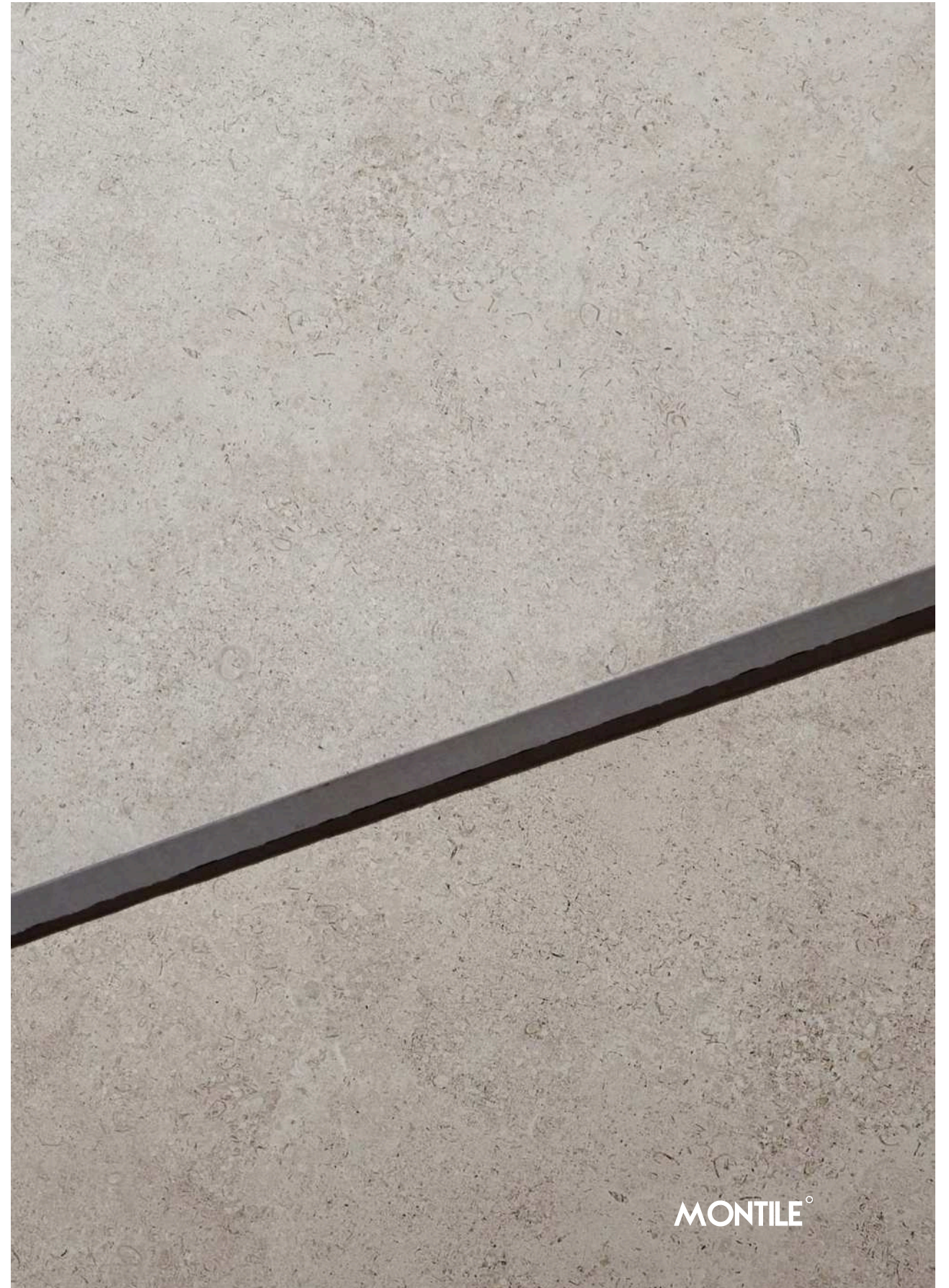


LM2661  
60x60x2cm 24"x24"

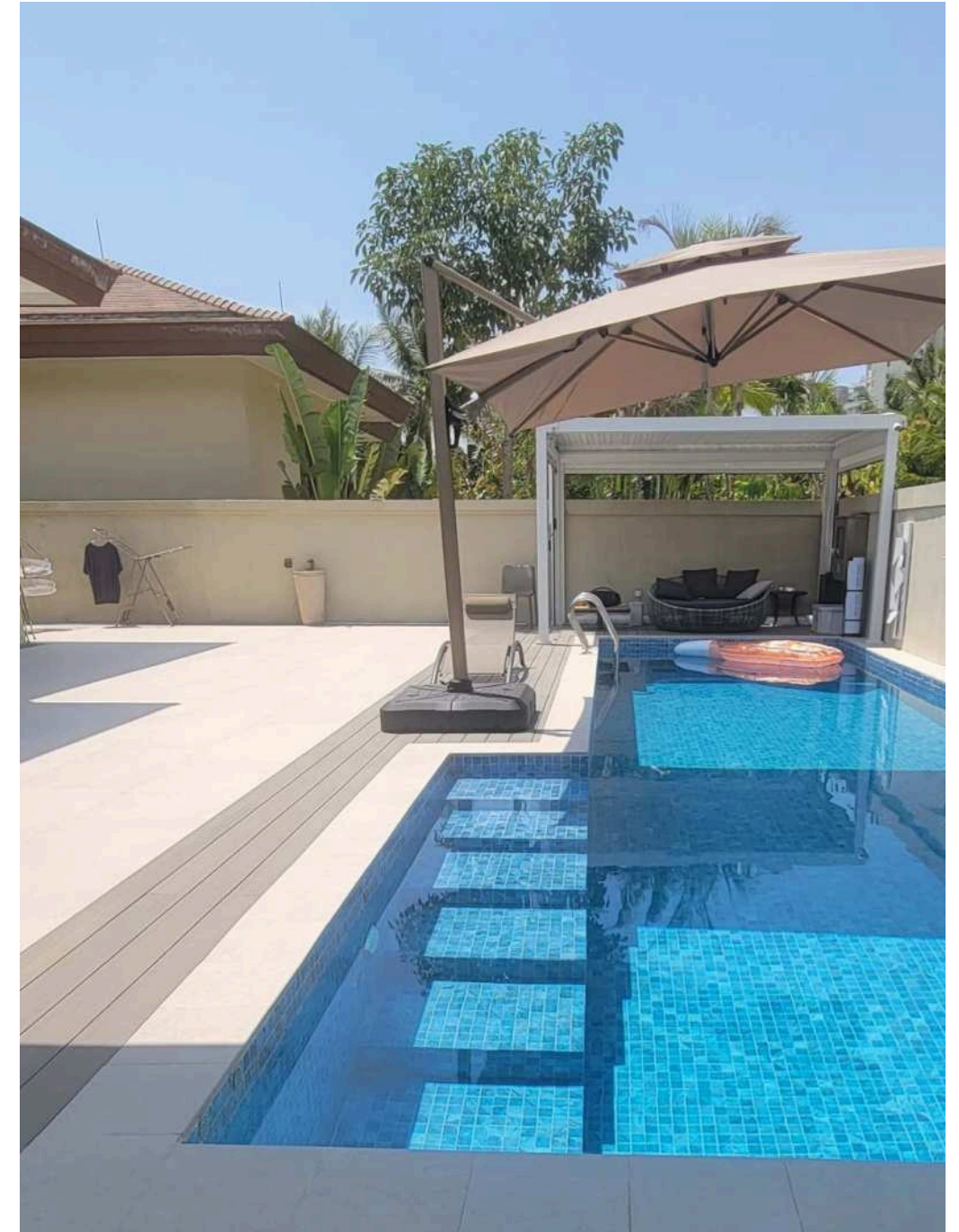


## Reefstone

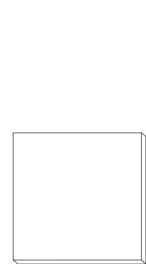
The design elements for reef stone come from the from rocks. Decorated with mottled gold dust which has relected the trace after washing by times andthe exposed stone texture has shaped the natural charm.



Quartz . RF Series  
Reefstone  
Slip Resistance Rating: R13



Size



60x60x2cm  
24" x 24"



60x120x1.8cm  
24" x 28"



Anti-Slip

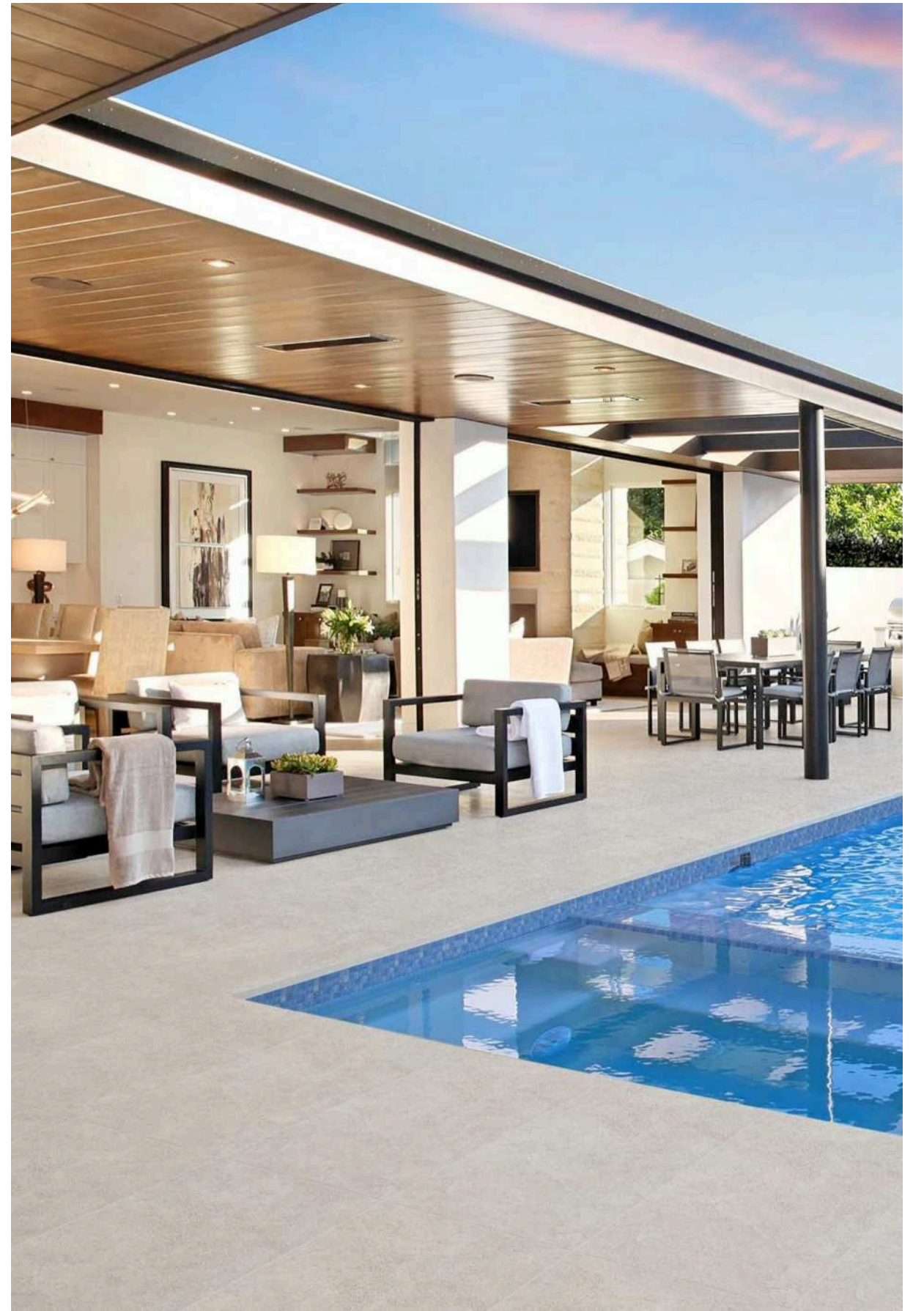
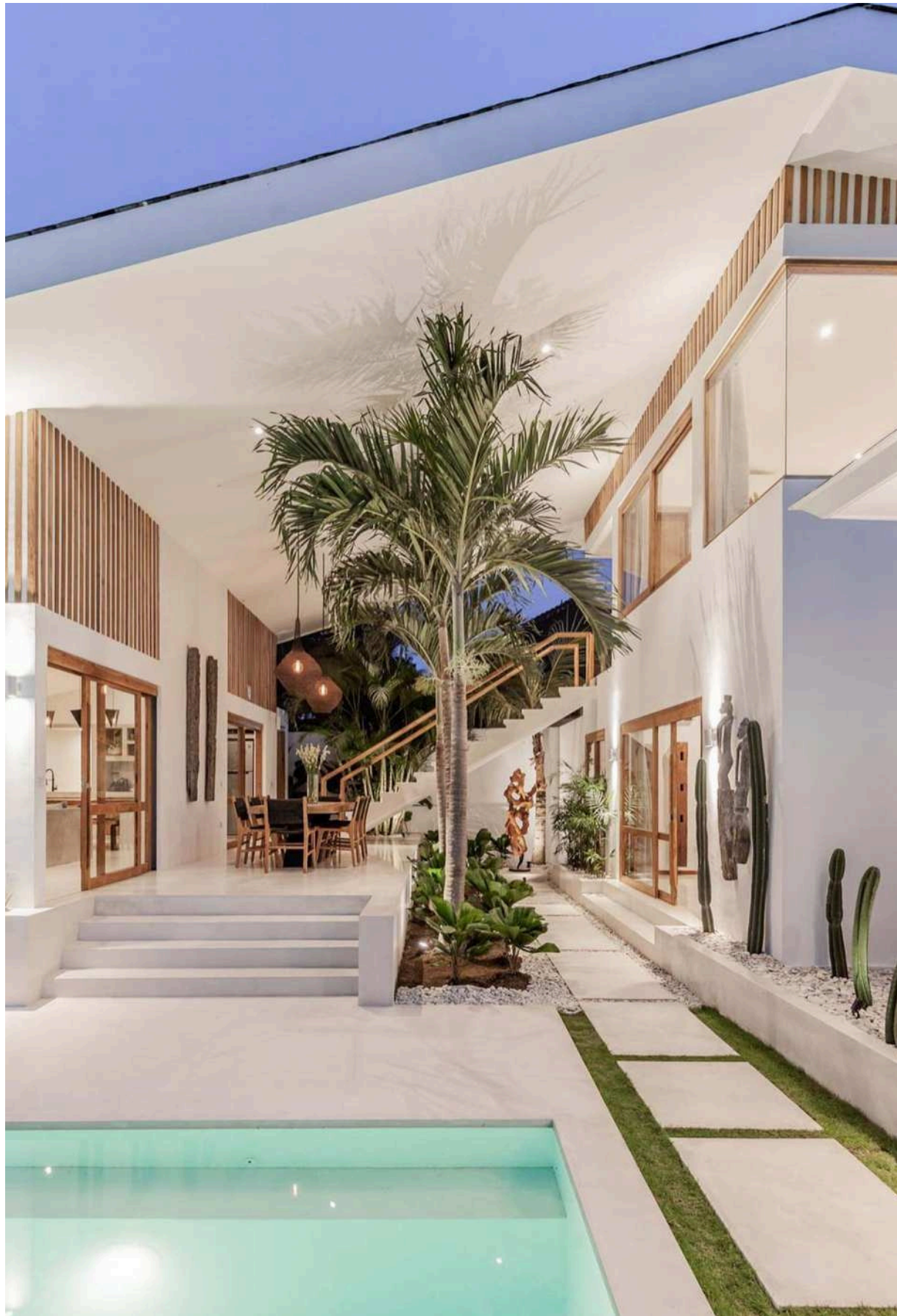


Schattierung

RF2660 60X60X2CM



RF60  
60x120x1.8cm 24"x28"



## INTERNATIONAL TECHNICAL STANDARDS:



**Easy Installation-** Viewgres outdoor porcelain is specifically designed for quick and easy installation with multiple setting options.



**Resistant-** High compressive strength and ultra-low absorption rates create a dense surface that resists mold, moss, dirt and staining.



**Skid-Resistant-** Structured paver top textures feature non-slip surfaces contributing to superior safety conditions.



**Color Durability-** Our extensive selection of color, fused by vitrification, becomes an integral part of the actual porcelain surface and is not affected by external elements conditions.



**Freeze Resistant-** 100% frost-free at temperatures as low as -60°F.



**Durable-** Pavers withstand loads of up to 2,200 lbs. and are engineered for reduced breakage.



**Stylish-** Available in a diverse range of contemporary colors and designs.



**Modular Design-** Viewgres outdoor porcelain are precision rectified for ease of installation and to allow for creative designs utilizing multiple size slabs in homogeneous patterns.



**Light Weight-** 37 lbs. for the 24" x 24" paver permit easy installation, removal and serviceability (excluding adhered installations).



**Easy to Clean-** Standard household cleaners can be used on Viewgres outdoor porcelain which may also be pressure washed with a low pressure washing device.



**Size Uniformity-** All slabs are precision rectified to insure consistency and expedite the installation process.

## PERFECT FOR:

- Driveways
- Pool decks
- Public Spaces
- Hotels
- Patios
- Steps
- Entranceways
- Promenades
- Walkways

## EASY INSTALLATION OVER:

- Sand
- Concrete
- Gravel
- Grass
- Pedestals

Properties		Standard	18mm Results	20mm Results	10mm Results	
Dimension and surface quality	Length and width	N≥15cm	±0.6%	-0.03%-0	0.06%-0.07%	-0.39%-0.19%
			±2.0mm	-0.2mm-0	0.35-0.39	-0.2mm-0.1mm
	Thickness	N≥15cm	±5%	+0.4%-+0.9%	1.2%	-1.1%-0.4%
			±0.5mm	+0.1mm-+0.2mm	0.24mm	-0.1mm-0
	Straightness of sides	N≥15cm	±0.5%	-0.03%-0.02%	0.1%	-0.03%-0.02%
			±1.5mm	-0.2mm-0.1mm	0.6mm	-0.1mm-0.1mm
	Rectangularity	N≥15cm	±0.5%	+0.09%-+0.10%	0.11%	-0.05%-0.02%
			±2.0mm	+0.5mm-+0.6mm	0.66mm	+0.3mm-+0.4mm
	Surface flatness					
	A) Centre curvature, related to diagonal calculated from the work size	N≥15cm	±0.5%	+0.01%-+0.02%	-0.02%-+0.02%	-0.02%-+0.02%
		±2.0mm	+0.1mm-+0.2mm	-0.2mm-+0.1mm	+0.2mm-+0.3mm	
b) Edge curvature related to the corresponding work sizes	N≥15cm	±0.5%	+0.05%-+0.07%	-0.02%-+0.02%	-0.05%-+0.04%	
		±2.0mm	+0.3mm-+0.4mm	-0.3mm-+0.1mm	+0.2mm-+0.4mm	
c) Warpage related to diagonal calculated from the work size	N≥15cm	±0.5%	-0.08%-0.07%	-0.09%-0.07%	-0.08%-+0.02%	
		±2.0mm	-0.7mm-0.6mm	-0.7mm-0.6mm	-0.6mm-0.4mm	
Surface Quality		A minimum of 95% of the tiles are to be free from visible defects which can impair the appearance of a major area of tiles.	100%	100%	100%	
Physical properties	Water absorption	E≤0.5%	0.1%	0.1%	0.1%	
	Percent mass fraction	Individual maximum Q6%	0.16%-0.31%	0.16%-0.31%	0.16%-0.31%	
	Breaking strength in N	≥1300	7000	11000	5000	
	Modulus of rupture, in N/mm <sup>2</sup>		Minimum ≥ 35	—	39.5	—
			Individual minimum 32	—	36	—
	Abrasion resistance	Report abrasion class		Class 4	Class 4	Class 4
		Report cycles passed		6000	6000	7000
	Crazing resistance: glazed tiles	Required	Fully resistance	Fully resistance 无釉裂	Fully resistance 无釉裂	
	Frost resistance	Required	Fully resistance 无釉纹或剥落	Fully resistance 无釉纹或剥落	Fully resistance 无釉纹或剥落	
	Static coefficient of friction: floor tiles	Individual ≥ 0.50	0.84-0.85	0.72-0.74	0.95-0.85	
Chemical properties	Resistance to staining	Minimum class 3	Class 5	Class 5	Class 4	
	Resistance to household chemicals and swimming pool salts	Minimum GB	GA	GA	GA	
	Resistance to low concentrations of acids and alkalis	Manufacturer to state classification	GLA	GLA	GLA	
	Resistance to high concentrations of acids and alkalis	Manufacturer to state classification	GHA	GHA	GHA	
Slip resistance (Ramp test)	DIN51130		R11	R11	R12	
	AS 4586.2013		P5	P5	P5	

## PACKING DETAILS

SERIES	Sizes	Pcs/Ctn	M <sup>2</sup> /Ctn	M <sup>2</sup> /Plt	Ctns/Plt	Kg/Plt
	Size	Pcs/Ctn	M <sup>2</sup> /Ctn	M <sup>2</sup> /Plt	Ctns/Plt	Kg/Plt
OUTDOOR PORCELAIN	60x60 24"x24" 2cm	2	0.72	23.04	32	1072
	60x120 24"x48" 1.8cm	1	0.72	22.32	31	1038
	15x90 6"x35" 1cm	10	1.35	/	/	/
	60x60 24"x24" 9.5mm	4	1.44	51.84	36	1080